

Datenblätter Hydraulik Anschlussplatten, Anschlussblöcke Mecabor

***Cetop03/NG6: MR3, MR3-PAB, MR3/C10-2, MRK3, MRK3-PAB,
MRSL3, MRSK3, MRF3, MRC3, MRP3***

***Cetop05/NG10: MR5, MR5-PAB, MR5/C10-2, MRK5, MRK5-PAB,
MRSK5, MRF5, MRC5, MRP5***

Adapter CETOP05/03, NG10/6: MRA-5/3, MRAD-5/3

Cetop07/NG16: MR7- 3/4", MR7- 1", MRF7

Adapter CETOP07/03, NG16/6: MRA-7/3

Adapter CETOP07/05, NG16/10: MRA-7/5

CETOP08, NG25: MR8-1", MRF8

Adapter CETOP08/05, NG25/10: MRA-8/5

Adapter CETOP08/07, NG25/16: MRA-8/7

Ihr Partner für Hydraulik und Pneumatik:

Hydro / Ass

Hydraulik - Steuerungstechnik GmbH

... wir machen das!

www.hydraulikhandel-saarland.de

Hydro Ass Hydraulik – Steuerungstechnik GmbH

Am Brichelberg 3, 66271 Kleinblittersdorf

Tel.: 06805/2049901; Fax: 06805/2049903

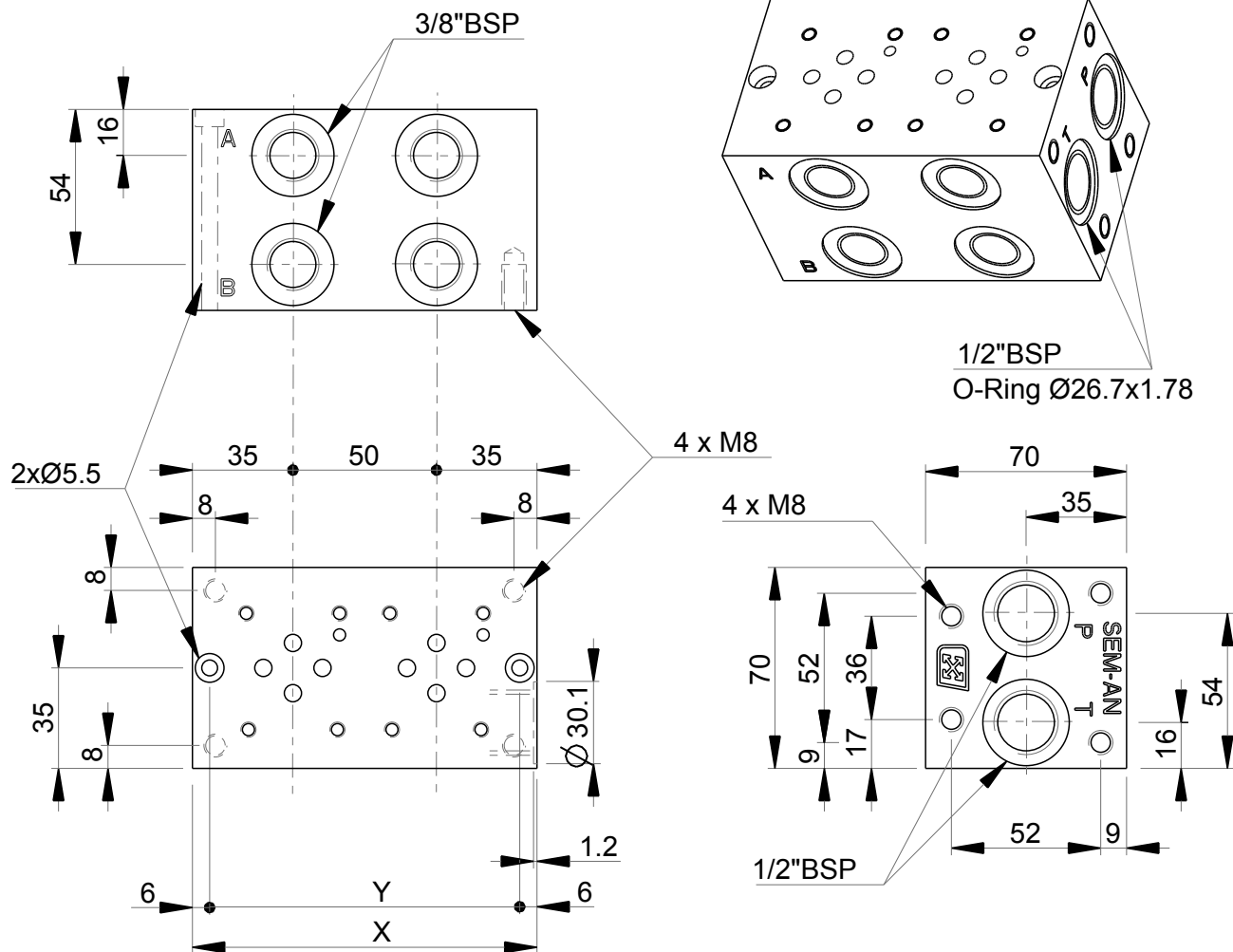
info@hydro-ass.de

www.hydro-ass.de – www.hydraulikhandel-saarland.de

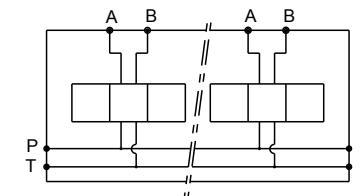


MR-3

Side ports manifold - CETOP 3 / NG6



Stations	X	Y	Cast iron (kg)	Al (kg)	CAD Files
1	70	58	2.10	0.80	MR3-1G
2	120	108	3.60	1.40	MR3-2G
3	170	158	5.10	2.00	MR3-3G
4	220	208	6.60	2.60	MR3-4G
5	270	258	8.10	3.20	MR3-5G
6	320	308	9.60	3.80	MR3-6G
7	370	358	11.10	4.40	MR3-7G
8	420	408	12.60	5.00	MR3-8G



Technical specifications	
Material	: Cast iron (0.6025) - Phosphating : Aluminium (3.1325) - Clear anodising
Pressure	: 300 bar max (Cast iron) - 250 bar max (Al)
Flow rate	: 60 L/min max

Designation code :

MR - 3 - * . G

MECABOR

CETOP 3
side ports

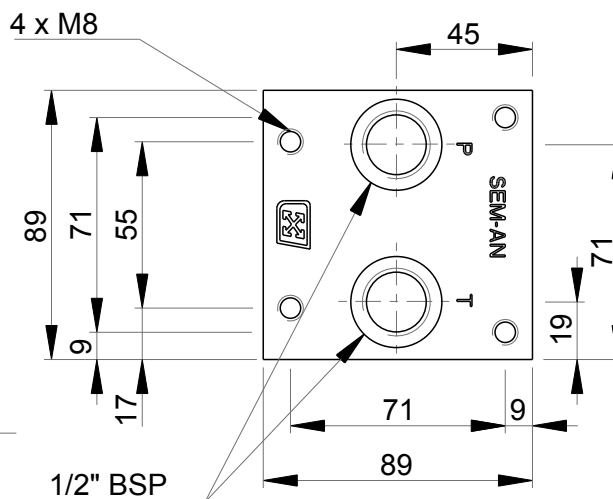
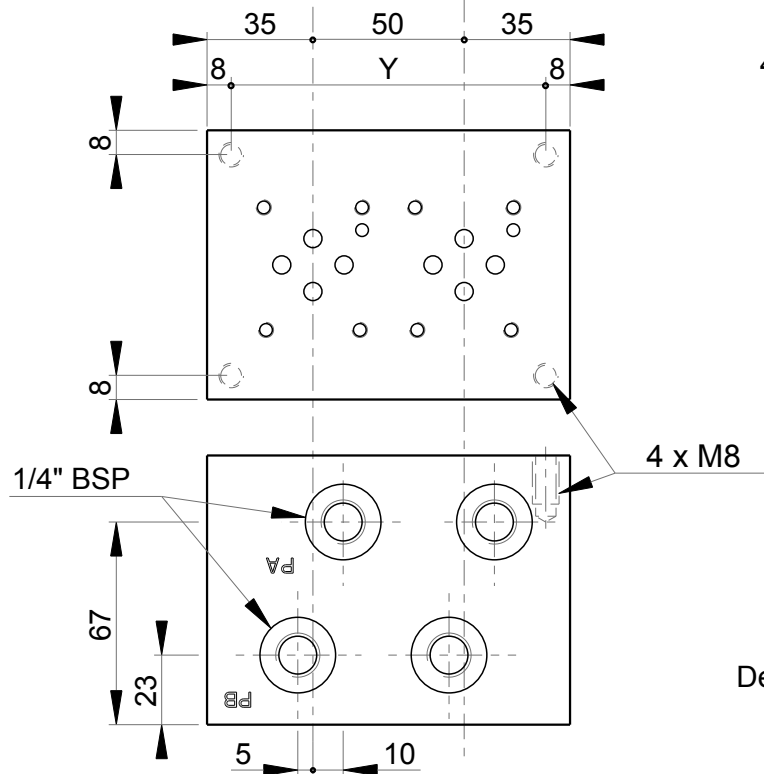
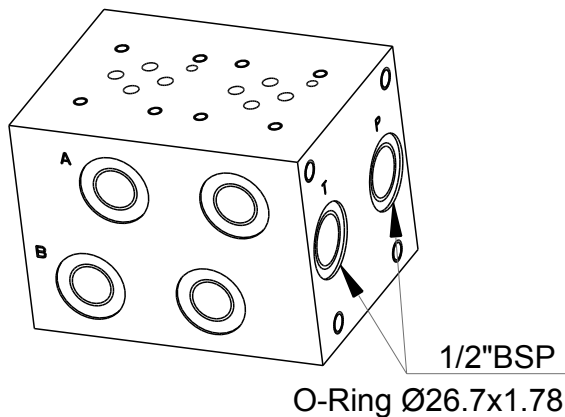
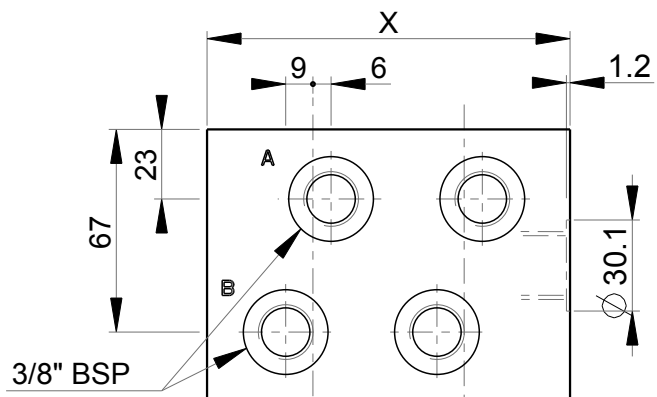
G : ports BSP

Station number

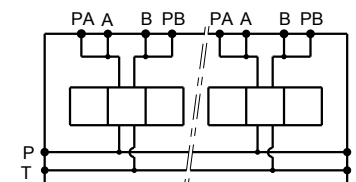


MR-3...P.AB

Side ports manifold + pressure test points on A and B
CETOP 3 / NG6



Stations	X	Y	(kg)	CAD Files
1	70	54	3.50	MR3-1GPAB
2	120	104	6.00	MR3-2GPAB
3	170	154	8.50	MR3-3GPAB
4	220	204	11.00	MR3-4GPAB
5	270	254	13.50	MR3-5GPAB
6	320	304	16.00	MR3-6GPAB
7	370	354	18.50	MR3-7GPAB
8	420	404	21.00	MR3-8GPAB



Technical specifications	
Material	: Cast iron (0.6025) - Phosphating
Pressure	: 300 bar max
Flow rate	: 50 L/min max

Designation code :

MR - 3 - * . G . P . AB

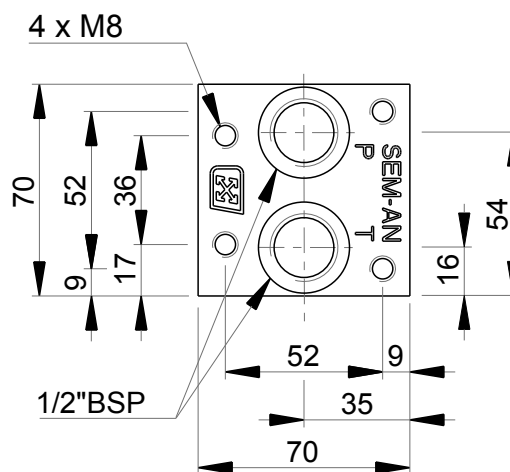
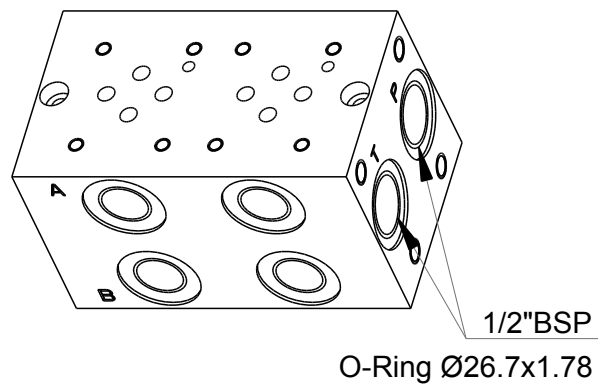
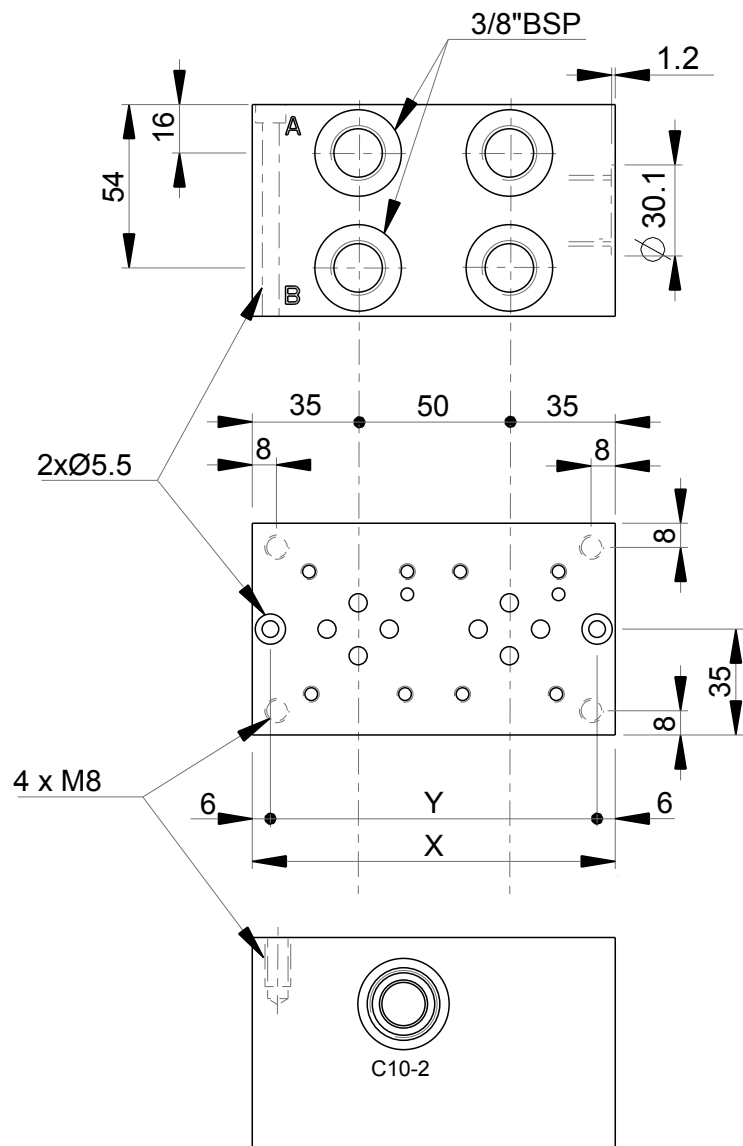
MECABOR

CETOP 3
side ports

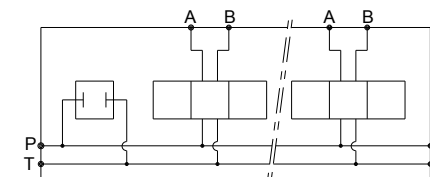
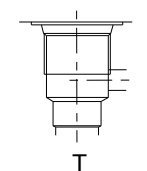
Station number

Pressure test points
on A and B

G : ports BSP



Cavity C10-2



Stations	X	Y	(kg)	CAD Files
1	90	78	2.90	MR3-1G/C10-2
2	120	108	3.80	MR3-2G/C10-2
3	170	158	5.30	MR3-3G/C10-2
4	220	208	6.80	MR3-4G/C10-2
5	270	258	8.30	MR3-5G/C10-2
6	320	308	9.80	MR3-6G/C10-2
7	370	358	11.30	MR3-7G/C10-2
8	420	408	12.80	MR3-8G/C10-2

Technical specifications

Material	: Cast iron (0.6025) - Phosphating
Pressure	: 300 bar max
Flow rate	: 60 L/min max

Designation code :

MR - 3 - * . G / C10-2

MECABOR

CETOP 3
side ports

Station number

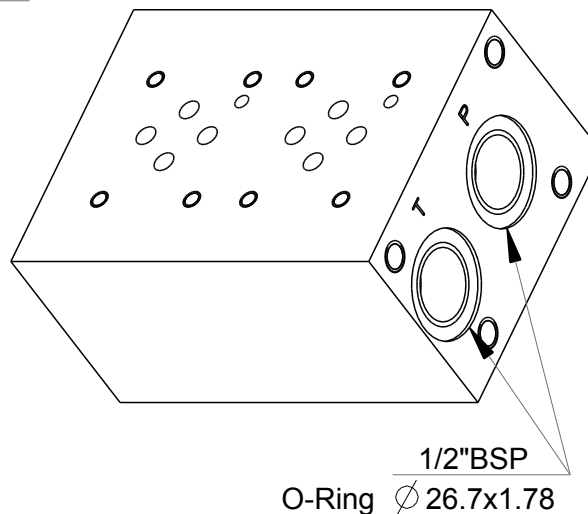
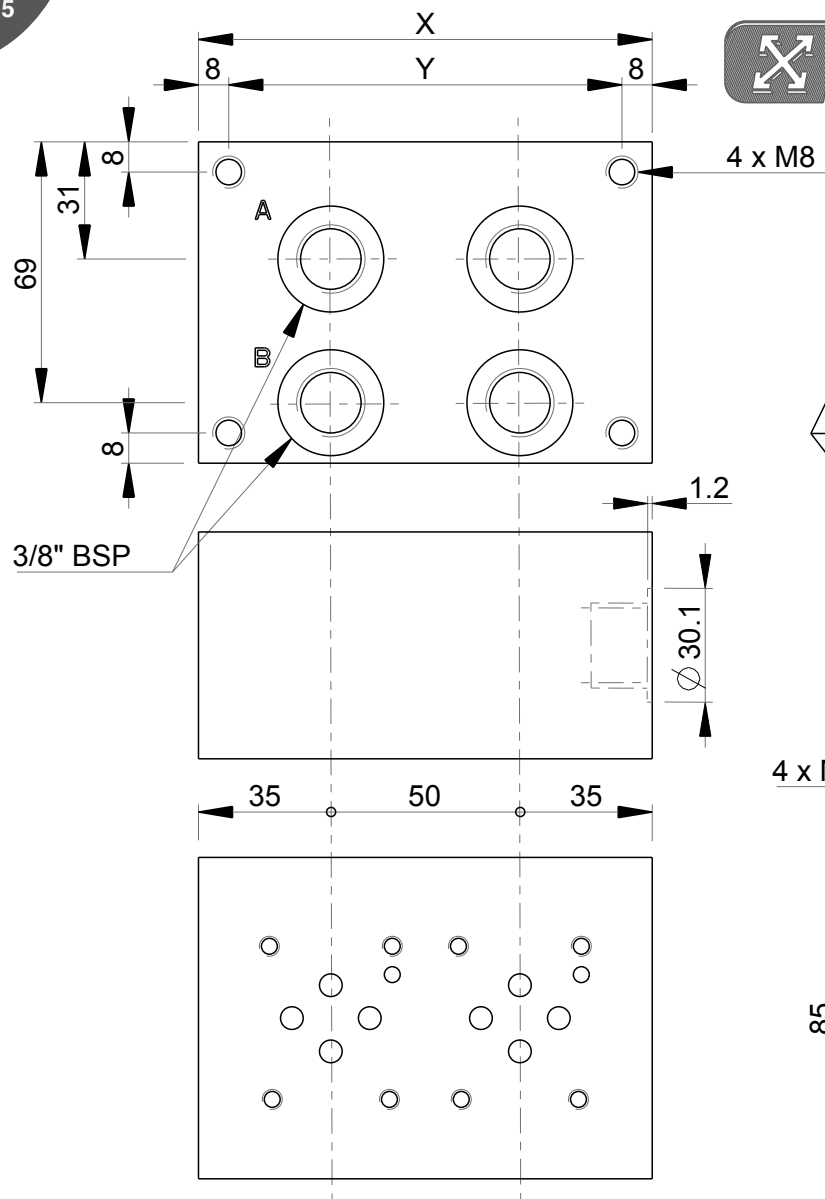
Cavity

G : ports BSP

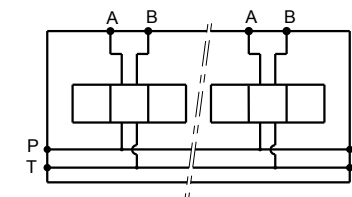
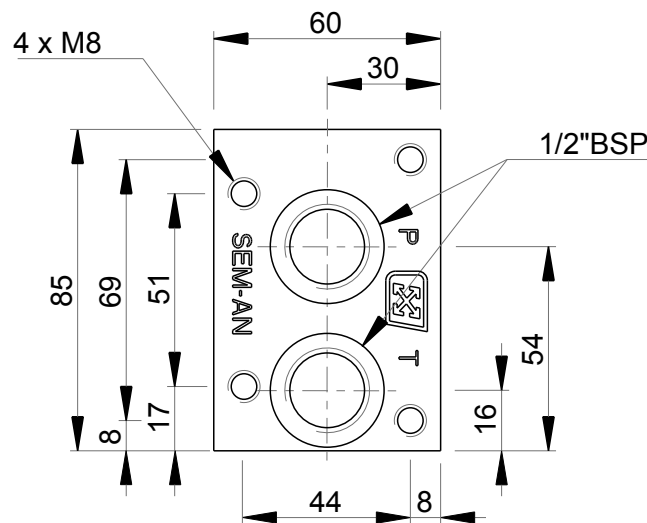


MR.K-3

Bottom ports manifold - CETOP 3 / NG6



Stations	X	Y	(kg)	CAD Files
1	70	54	2.35	MRK3-1G
2	120	104	3.90	MRK3-2G
3	170	154	5.45	MRK3-3G
4	220	204	7.00	MRK3-4G
5	270	254	8.55	MRK3-5G
6	320	304	10.10	MRK3-6G
7	370	354	11.65	MRK3-7G
8	420	404	13.20	MRK3-8G



Technical specifications	
Material	: Cast iron (0.6025) - Phosphating
Pressure	: 300 bar max
Flow rate	: 50 L/min max

Designation code :

MR . K - 3 - * . G

MECABOR

Bottom ports

CETOP 3

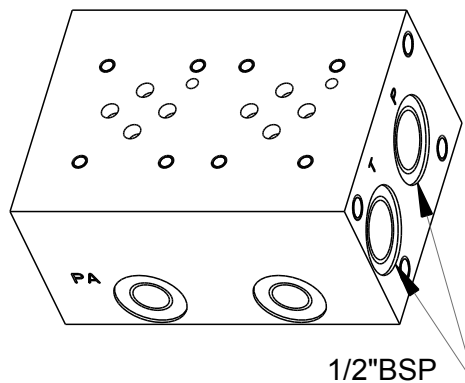
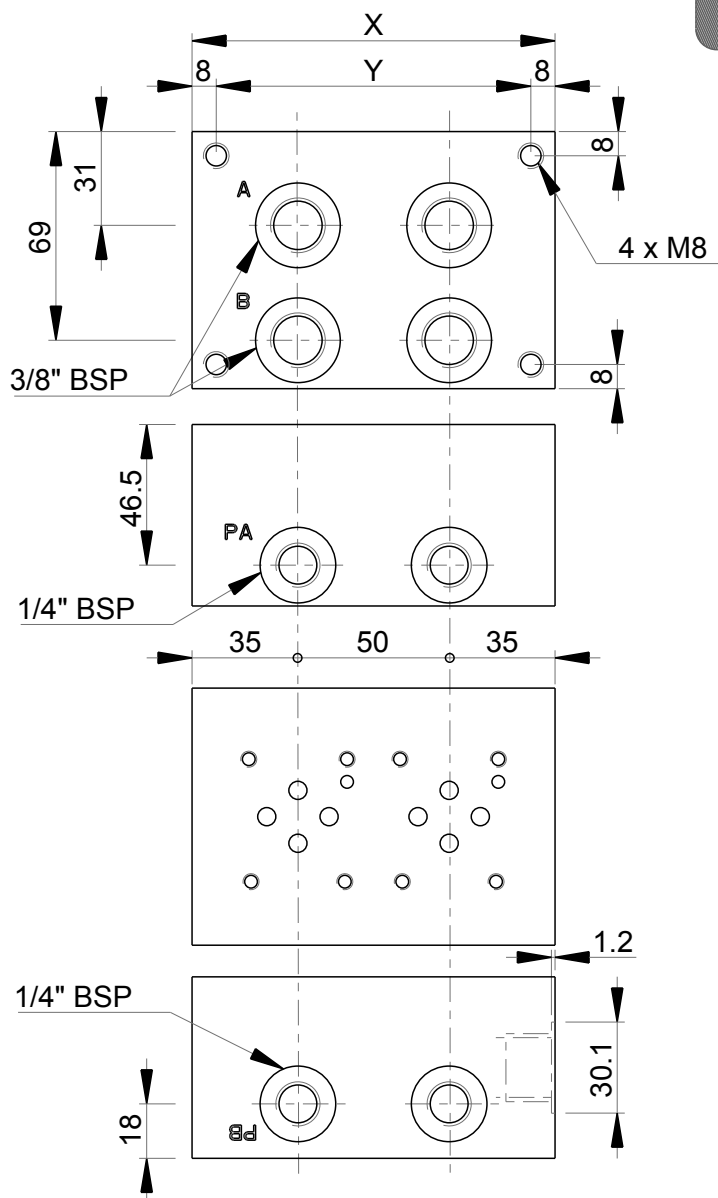
G : ports BSP

Station number

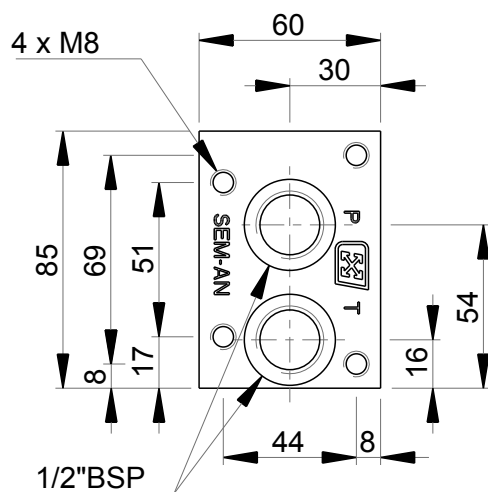


MR.K-3...P.AB

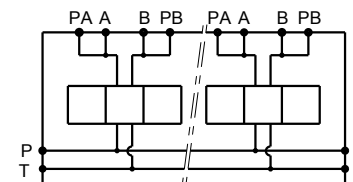
Bottom ports manifold + pressure test points on A and B
CETOP 3 / NG6



1/2" BSP
O-Ring $\varnothing 26.7 \times 1.78$



Stations	X	Y	(kg)	CAD Files
1	70	54	2.35	MRK3-1GPAB
2	120	104	3.90	MRK3-2GPAB
3	170	154	5.45	MRK3-3GPAB
4	220	204	7.00	MRK3-4GPAB
5	270	254	8.55	MRK3-5GPAB
6	320	304	10.10	MRK3-6GPAB
7	370	354	11.65	MRK3-7GPAB
8	420	404	13.20	MRK3-8GPAB

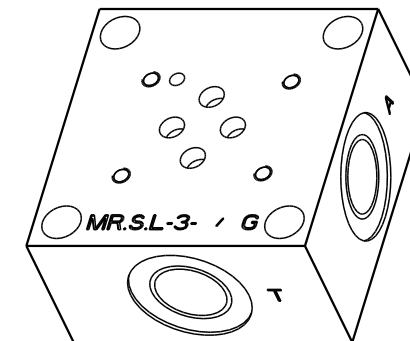
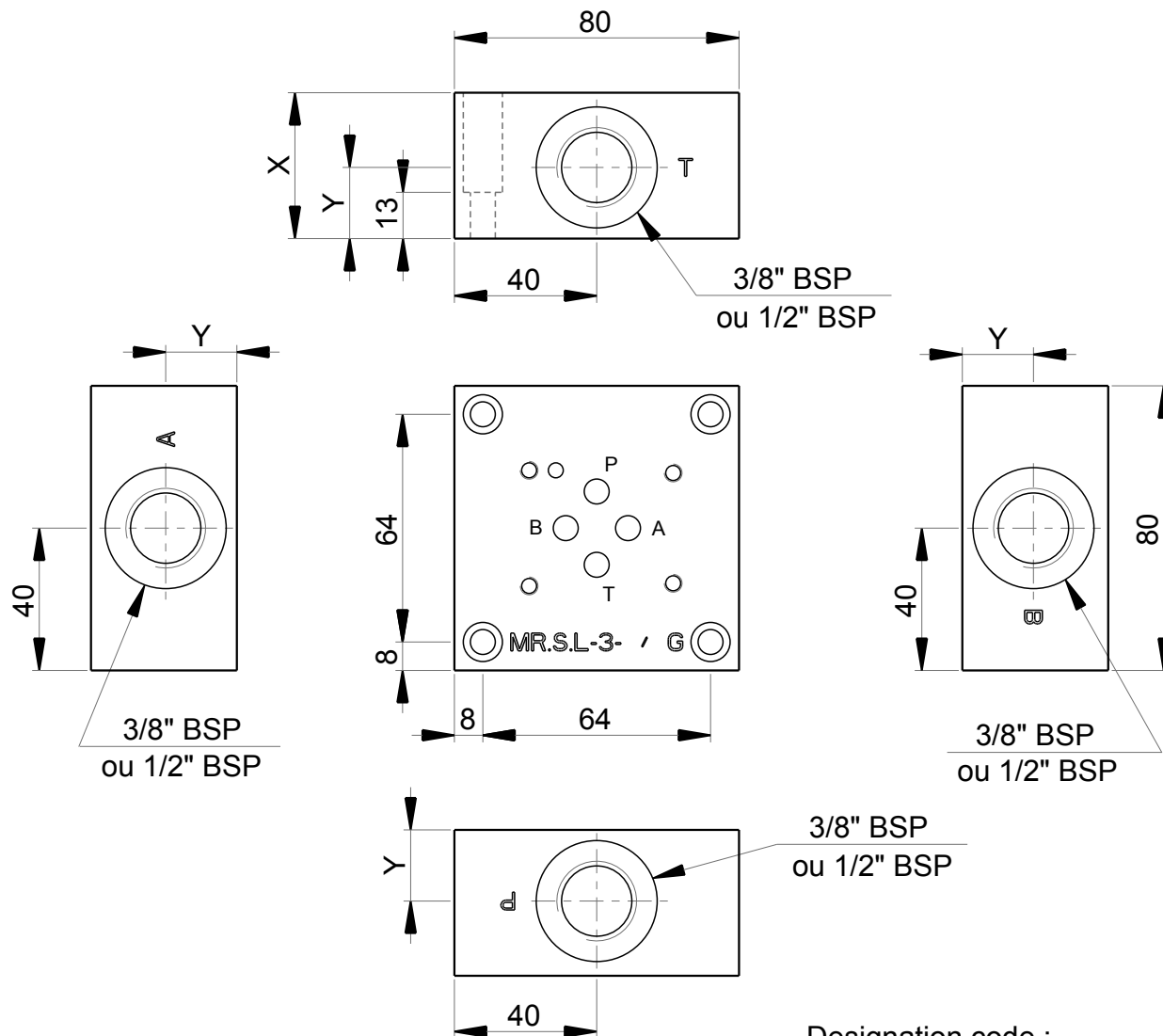


Technical specifications	
Material	: Cast iron (0.6025) - Phosphating
Pressure	: 300 bar max
Flow rate	: 50 L/min max

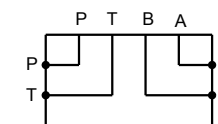
Designation code : **MR . K - 3 - * . G . P . AB**

MECABOR _____
 Bottom ports _____
 CETOP 3 _____
 Station number _____

Pressure test points on A and B
 G : ports BSP



Ports	X	Y	(kg)	CAD Files
3/8"	35	17	1.40	MRSL3-1/2"G
1/2"	41	20	1.56	MRSL3-3/8"G



Designation code :

MR . S . L - 3 - * G

MECABOR

Subplate

Side ports

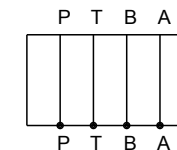
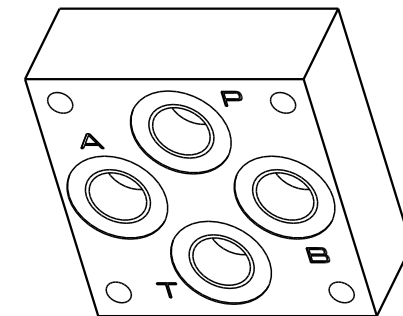
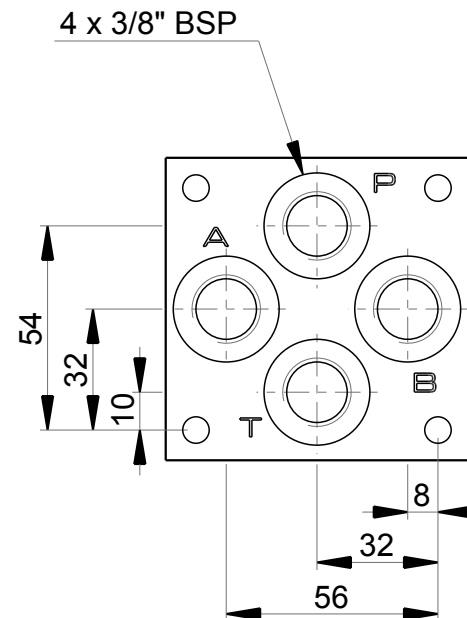
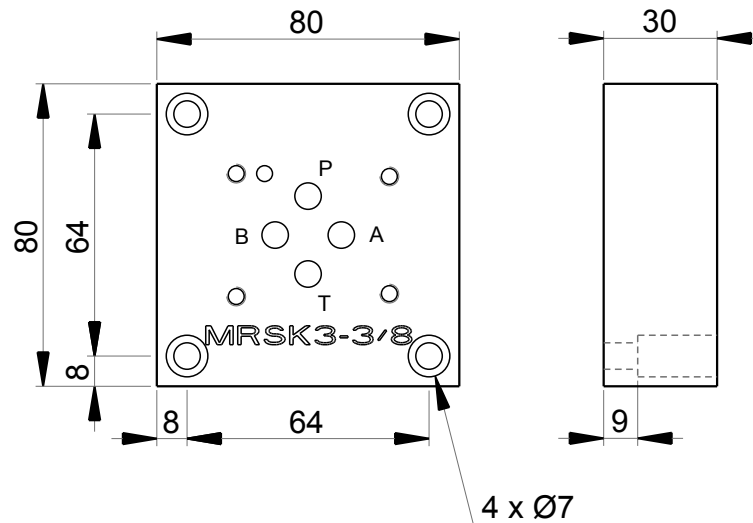
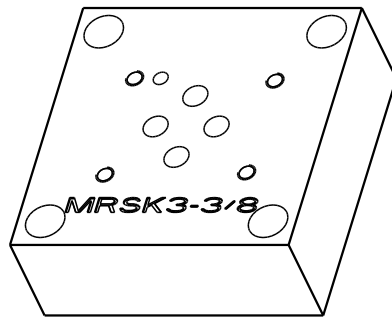
CETOP 3

G : ports BSP

 3/8"
1/2"

Technical specifications

Material	: Cast iron (0.7040) - Phosphating
Pressure	: 350 bar max
Flow rate	: 60 L/min max (3/8" BSP)
	: 80 L/min max (1/2" BSP)



CAD Files
MRSK3-3/8"G

Technical specifications

Material	: Cast iron (0.7040) - Phosphating
Pressure	: 350 bar max
Flow rate	: 60 L/min max
Weight	: 1.19 kg

Designation code :

MR . S . K - 3 - 3/8" G

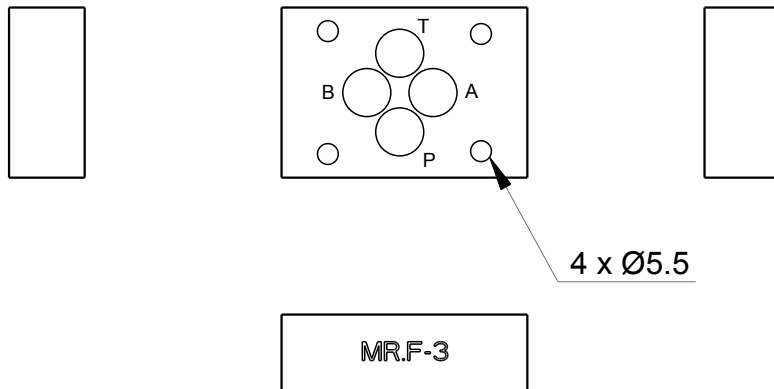
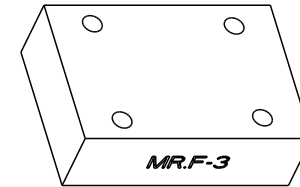
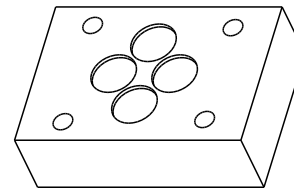
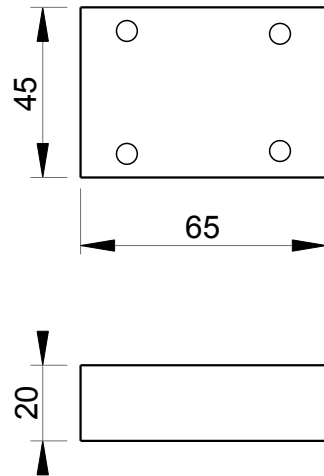
MECABOR

Subplate

Bottom ports

G : ports BSP

CETOP 3



Technical specifications	
Material	: Steel (1.0736) - Phosphating
Pressure	: 400 bar max
Weight	: 0.46 kg
Supplied with seals and screws	

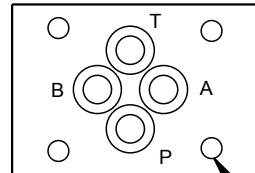
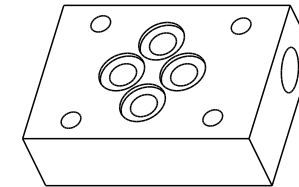
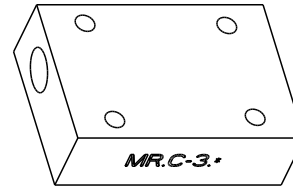
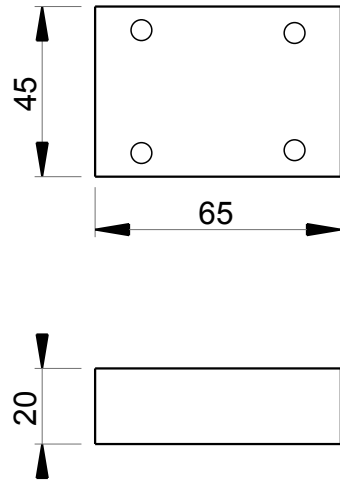
Designation code :

MR . F - 3

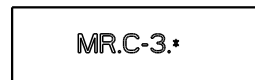
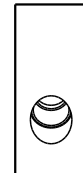
MECABOR

Blanking plate

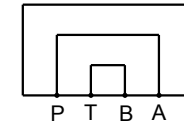
CETOP 3



4 x Ø5.5

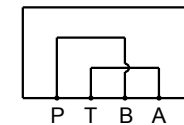


MR.C-3.PA



CAD Files
MRC3PA

MR.C-3.PB



MRC3PB

Technical specifications	
Material	: Steel (1.0736) - Phosphating
Pressure	: 400 bar max
Weight	: 0.40 kg
Supplied with seals	

Designation code :

MR . C - 3 . *

MECABOR

Crossover plate

CETOP 3

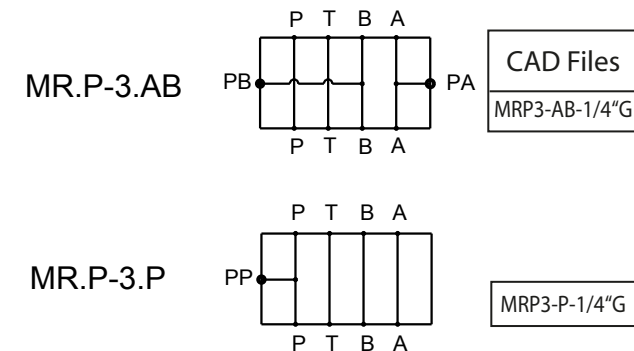
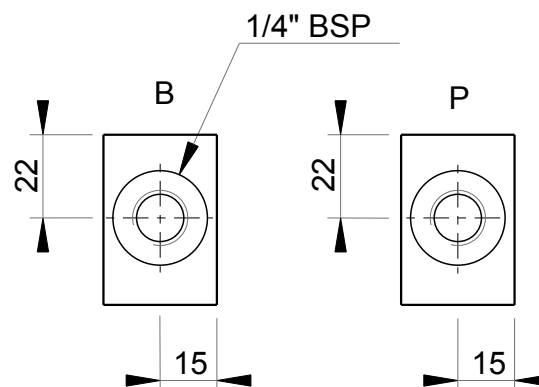
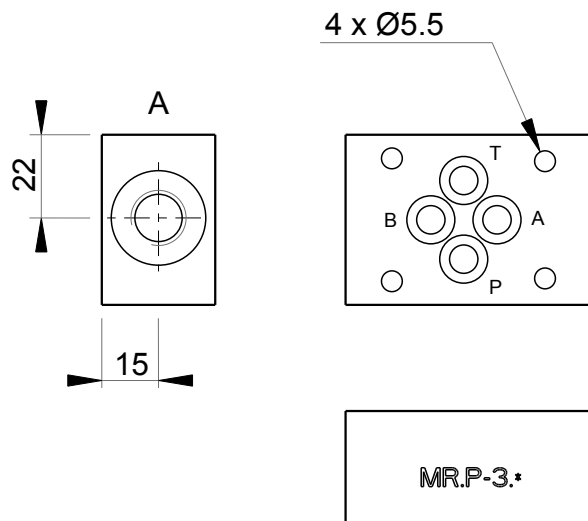
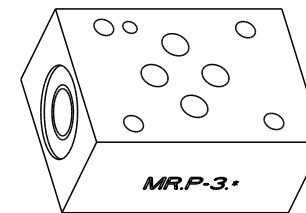
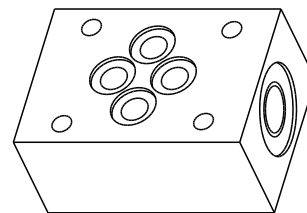
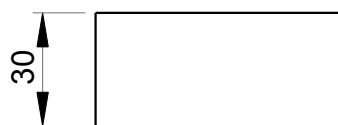
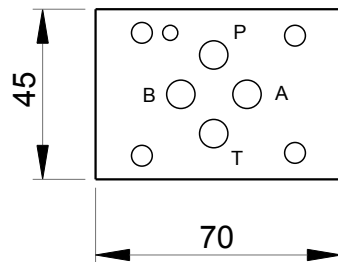
PA = P - A
T - B

PB = P - B
T - A



MR.P-3

Sandwich plate for pressure test points
CETOP 3 / NG6



Technical specifications	
Material	: Steel (1.0736) - Phosphating
Pressure	: 400 bar max
Weight	: 0.64 kg
Supplied with seals	

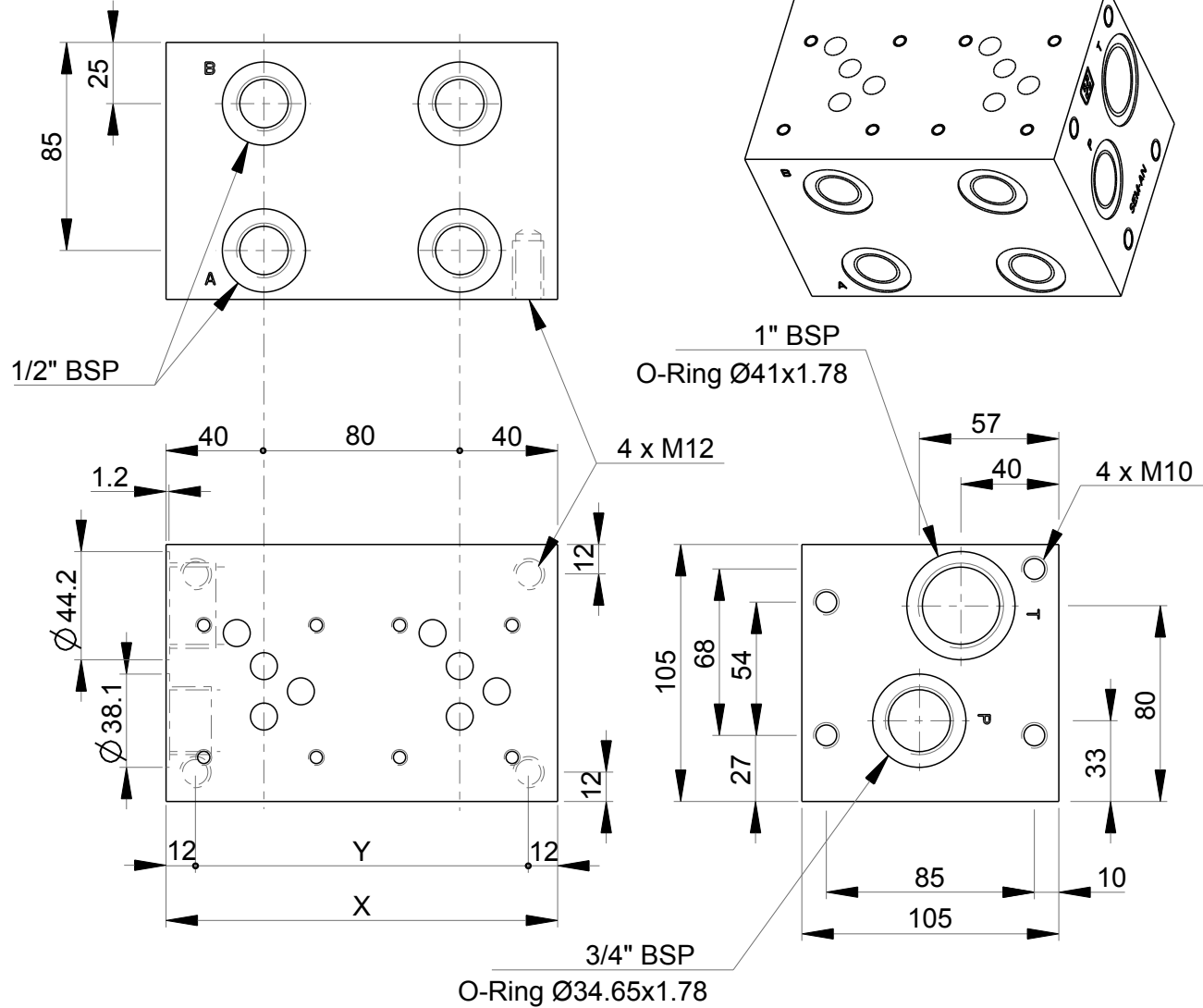
Designation code : **MR . P - 3 . * - 1/4" G**

MECABOR
Sandwich plate for
pressure test points
CETOP 3

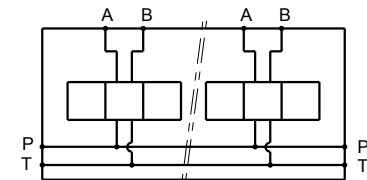
G : ports BSP
P = pressure test point on P
AB = pressure test points
on A and B

MR-5

Side ports manifold - CETOP 5 / NG10



Stations	X	Y	(kg)	CAD Files
1	80	56	5.80	MR5-1G
2	160	136	11.30	MR5-2G
3	240	216	17.00	MR5-3G
4	320	296	22.70	MR5-4G
5	400	376	28.50	MR5-5G
6	480	456	34.20	MR5-6G
7	560	536	39.90	MR5-7G
8	640	616	45.60	MR5-8G



Technical specifications	
Material	: Cast iron (0.6025) - Phosphating
Pressure	: 300 bar max
Flow rate	: 120 L/min max

Designation code :

MR - 5 - * . G

MECABOR

CETOP 5
side ports

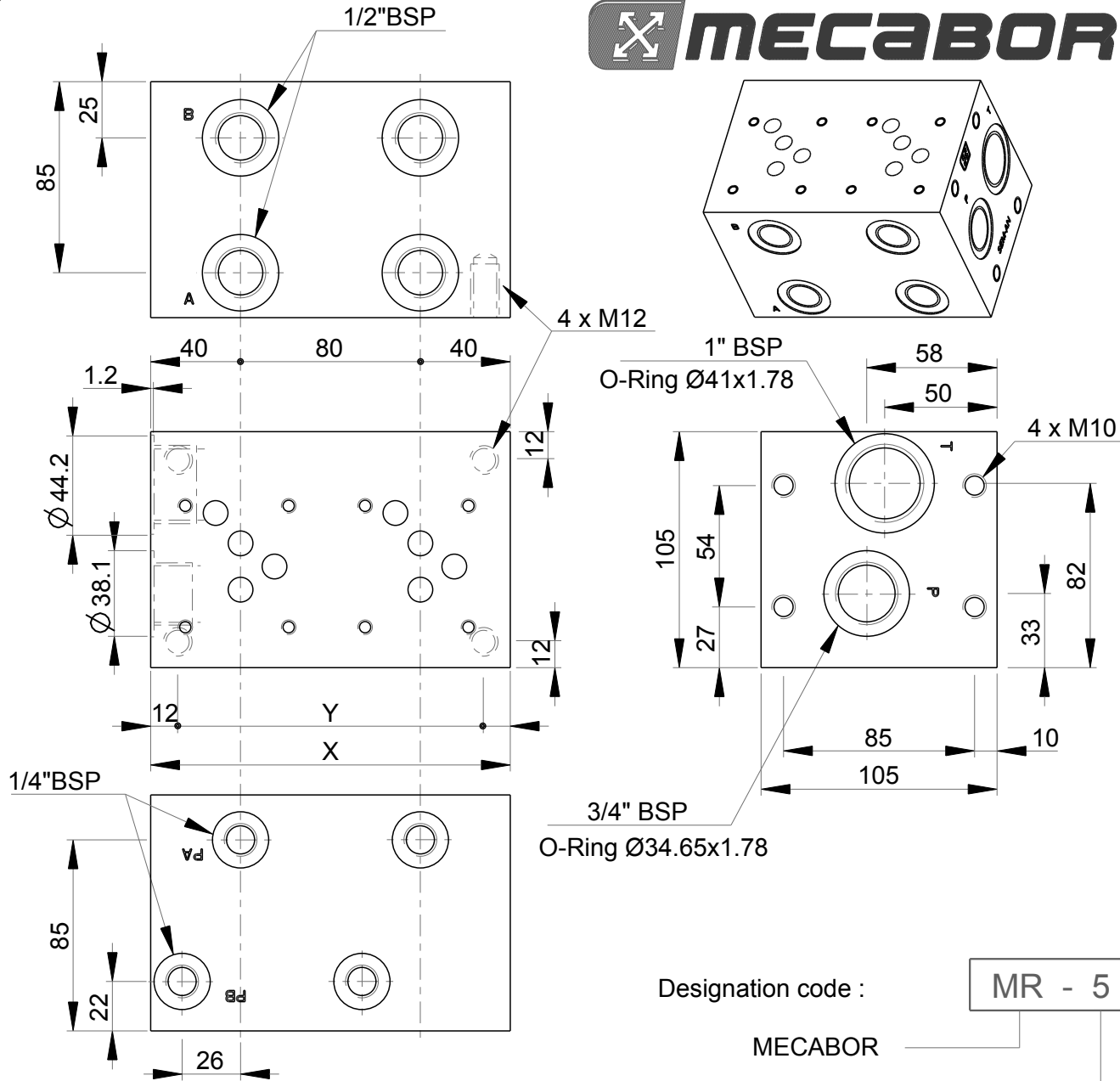
G : ports BSP

Station number

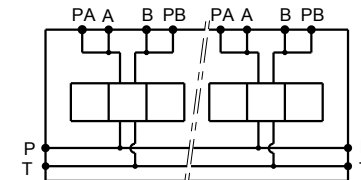


MR-5...P.AB

Side ports manifold + pressure test points on A and B
CETOP 5 / NG10



Stations	X	Y	(kg)	CAD Files
1	80	56	5.80	MR5-1GPAB
2	160	136	11.30	MR5-2GPAB
3	240	216	17.00	MR5-3GPAB
4	320	296	22.70	MR5-4GPAB
5	400	376	28.50	MR5-5GPAB



Technical specifications	
Materiel	: Cast iron (0.6025) - Phosphating
Pressure	: 300 bar max
Flow rate	: 120 L/min max

Designation code :

MR - 5 - * . G . P . AB

MECABOR

CETOP 5
side ports

Station number

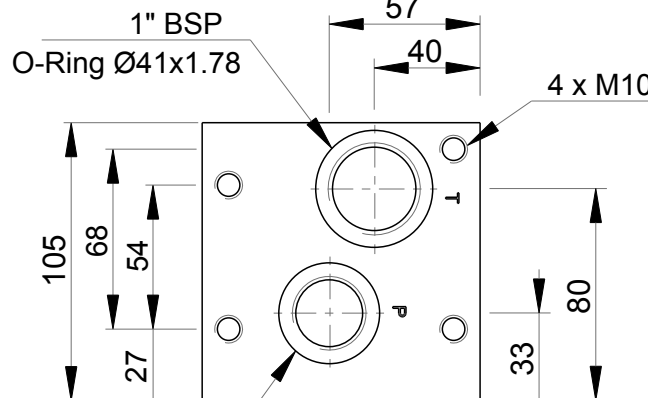
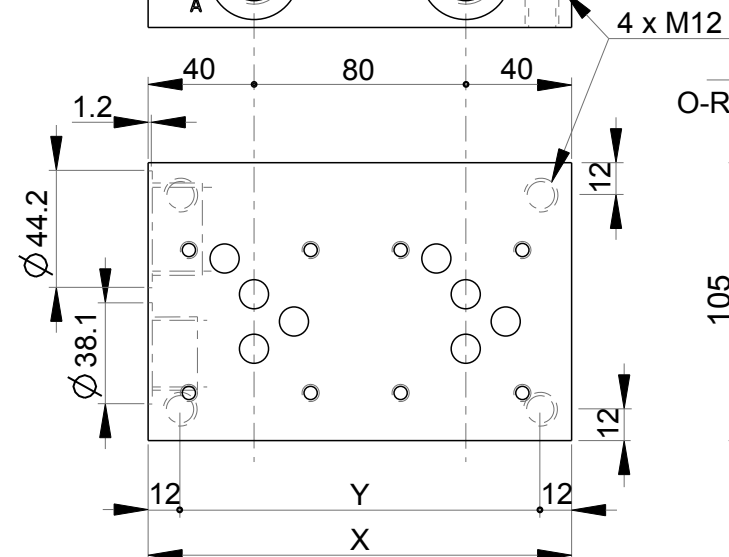
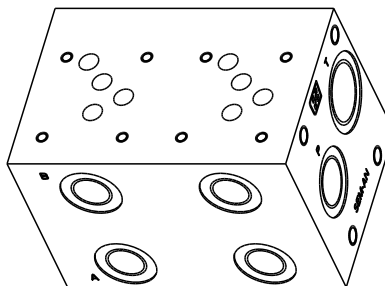
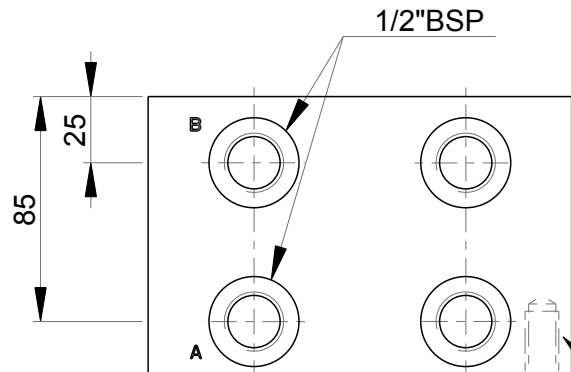
Pressure test points
on A and B

G : ports BSP

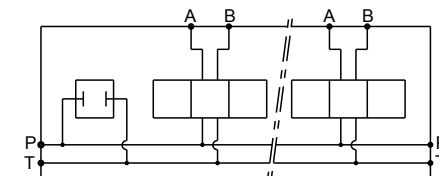
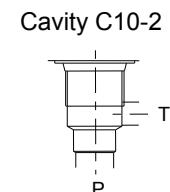
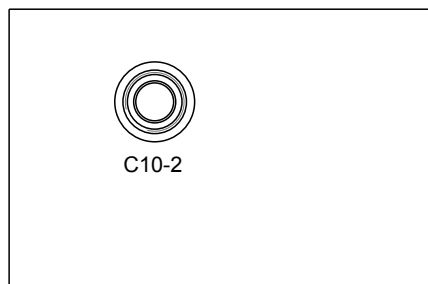


MR-5...C10-2

Side ports manifold + C10-2 cavity
CETOP 5 / NG10



Stations	X	Y	(kg)	CAD Files
1	80	56	5.70	MR5-1G/C10-2
2	160	136	11.30	MR5-2G/C10-2
3	240	216	16.90	MR5-3G/C10-2
4	320	296	22.60	MR5-4G/C10-2
5	400	376	28.40	MR5-5G/C10-2
6	480	456	34.10	MR5-6G/C10-2
7	560	536	39.80	MR5-7G/C10-2
8	640	616	45.50	MR5-8G/C10-2



Designation code :

MR - 5 - * . G / C10-2

MECABOR

CETOP 5
side ports

Station number

Cavity

G : ports BSP

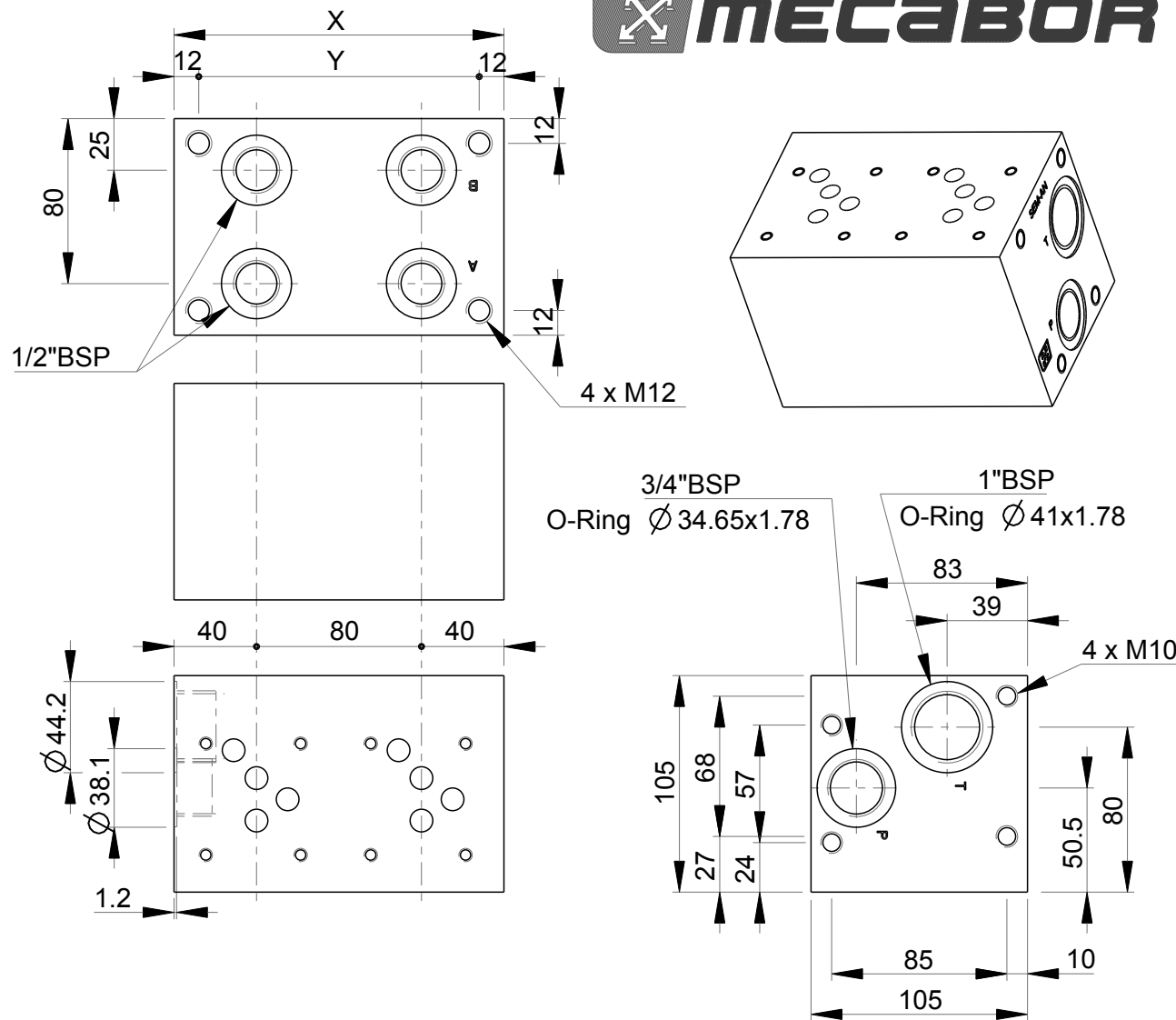
Technical specifications

Material	: Cast iron (0.6025) - Phosphating
Pressure	: 300 bar max
Flow rate	: 120 L/min max

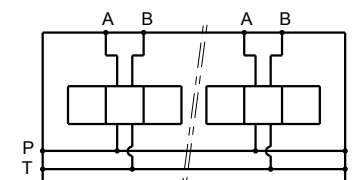


MR.K-5

Bottom ports manifold - CETOP 5 / NG10



Stations	X	Y	(kg)	CAD Files
1	80	56	5.80	MRK5-1G
2	160	136	11.30	MRK5-2G
3	240	216	17.00	MRK5-3G
4	320	296	22.70	MRK5-4G
5	400	376	28.50	MRK5-5G
6	480	456	34.20	MRK5-6G
7	560	536	39.90	MRK5-7G
8	640	616	45.60	MRK5-8G



Technical specifications	
Material	: Cast iron (0.6025) - Phosphating
Pressure	: 300 bar max
Flow rate	: 120 L/min max

Designation code :

MR . K - 5 - * . G

MECABOR

Bottom ports

CETOP 5

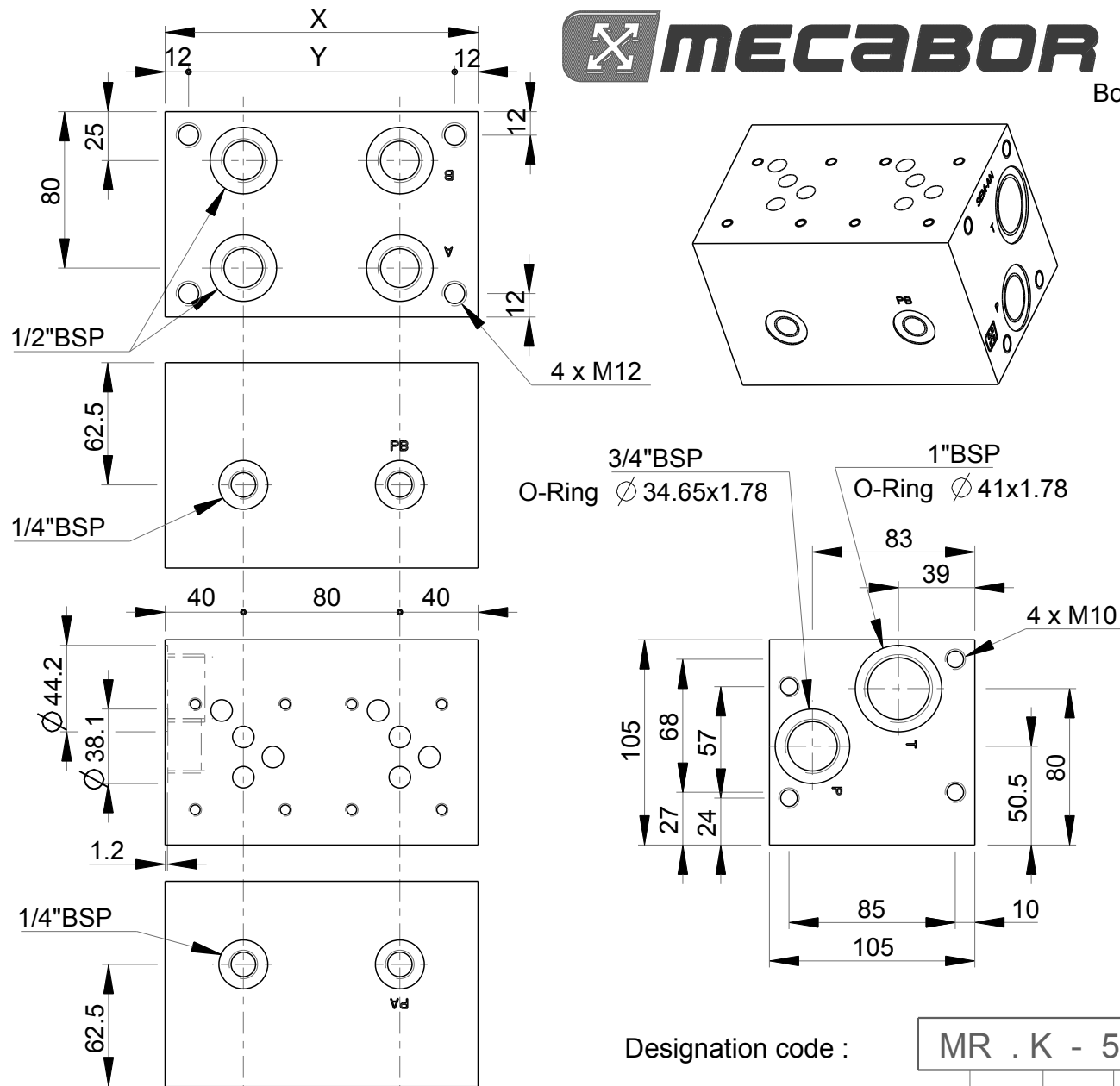
G : ports BSP

Station number

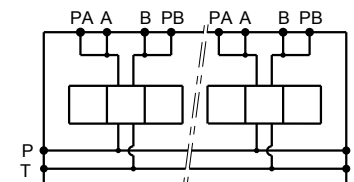


MR.K-5...P.AB

Bottom ports manifold + pressure test points on A and B
CETOP 5 / NG10



Stations	X	Y	(kg)	CAD Files
1	80	56	5.80	MRK5-1GPAB
2	160	136	11.30	MRK5-2GPAB
3	240	216	17.00	MRK5-3GPAB
4	320	296	22.70	MRK5-4GPAB
5	400	376	28.50	MRK5-5GPAB



Designation code : **MR . K - 5 - * . G . P . AB**

MECABOR

Bottom ports

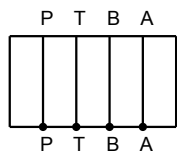
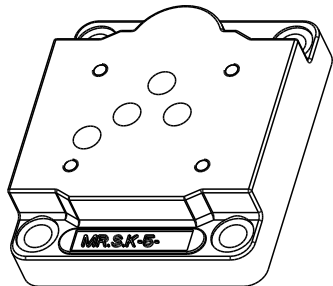
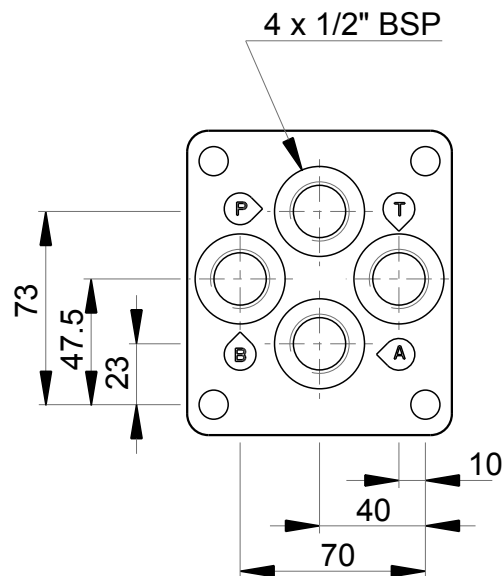
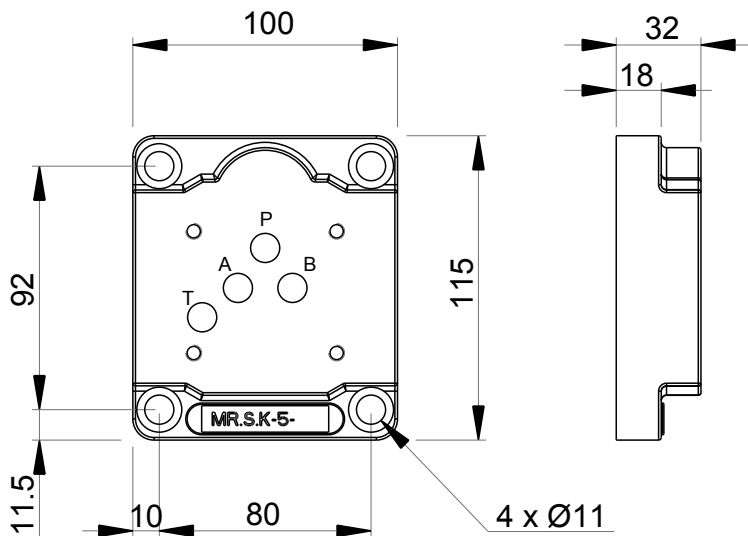
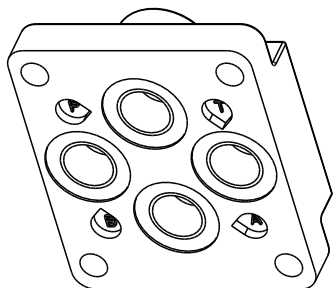
CETOP 5

Station number

Pressure test points
on A and B

G : ports BSP

Technical specifications	
Material	: Cast iron (0.6025) - Phosphating
Pressure	: 300 bar max
Flow rate	: 120 L/min max



CAD Files
MRSK5-1/2"G

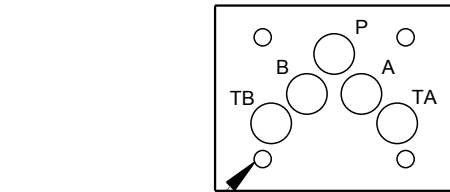
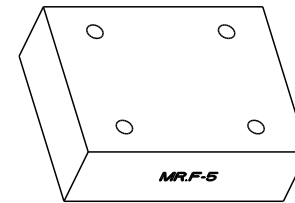
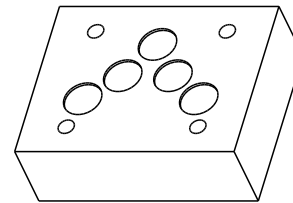
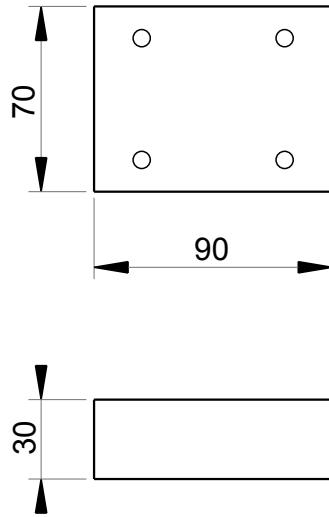
Technical specifications	
Material	: Cast iron (0.7040) - Phosphating
Pressure	: 350 bar max
Flow rate	: 100 L/min max
Weight	: 1.9 kg

Designation code :

MR . S . K - 5 - 1/2" G

MECABOR
Subplate
Bottom ports

G : ports BSP
CETOP 5



4 x Ø6.5



Technical specifications	
Material	: Steel (1.0736) - Phosphating
Pressure	: 400 bar max
Weight	: 1.50 kg
Supplied with seals and screws	

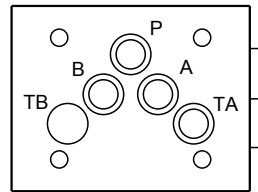
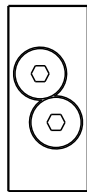
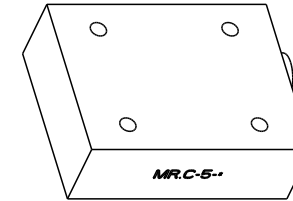
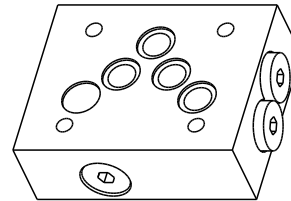
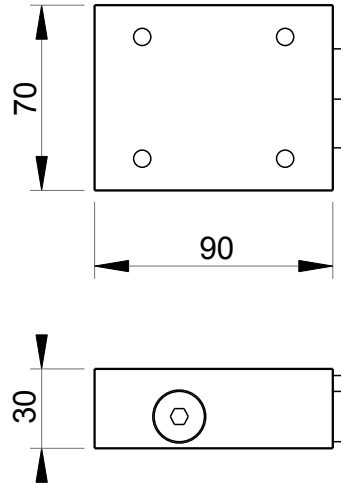
Designation code :

MR . F - 5

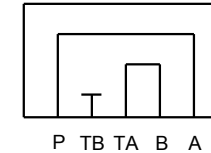
MECABOR

Blanking plate

CETOP 5

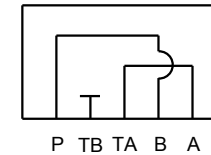


MR.C-5.PA

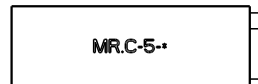


CAD Files
MRC5PA

MR.C-5.PB



MRC5PB



Technical specifications	
Material	: Steel (1.0736) - Phosphating
Pressure	: 400 bar max
Weight	: 1.35 kg
supplied with seals	

Designation code :

MR . C - 5 . *

MECABOR

Crossover plate

CETOP 5

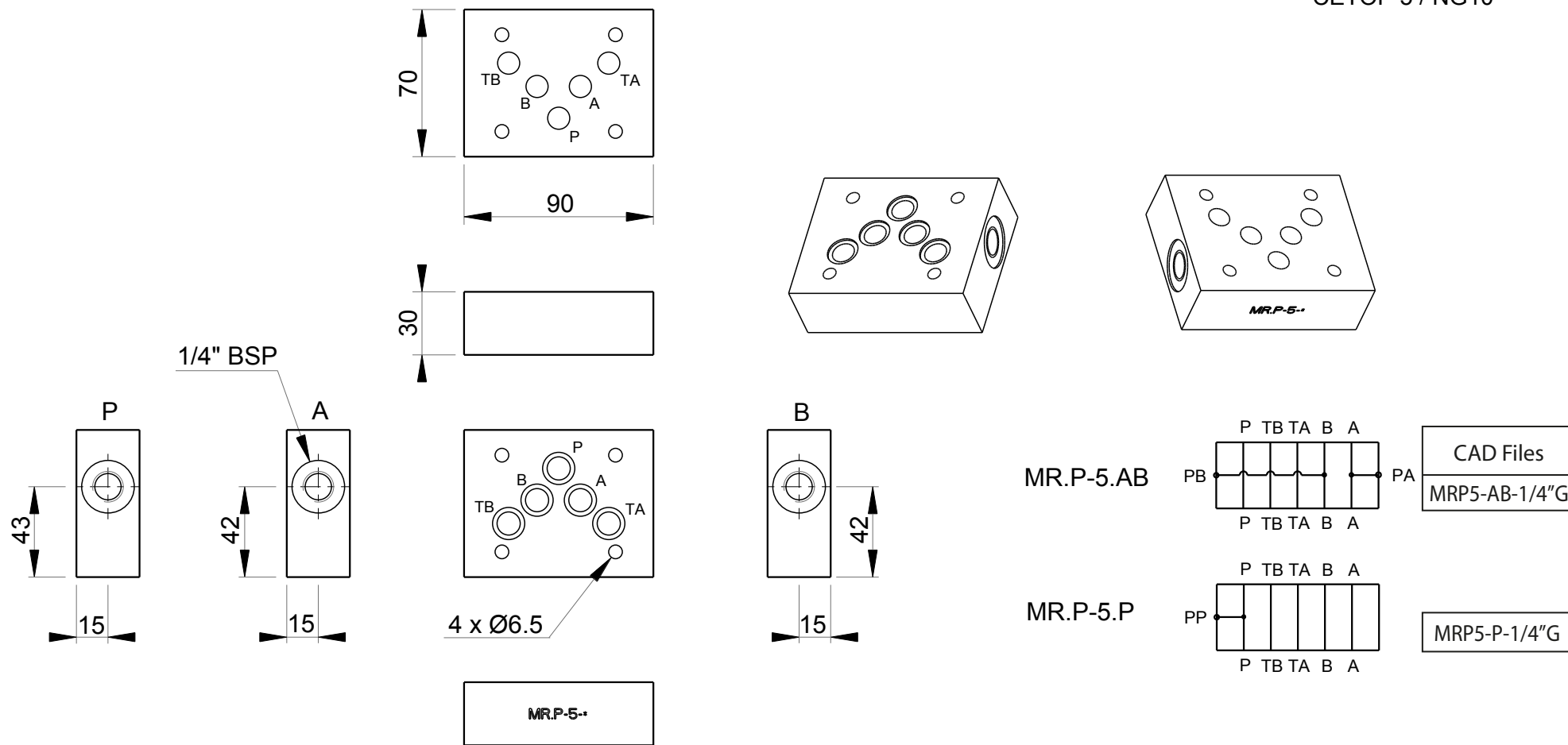
PA = P - A
T - B

PB = P - B
T - A



MR.P-5

Sandwich plate for pressure test points
CETOP 5 / NG10



Technical specifications	
Material	: Steel (1.0736) - Phosphating
Pressure	: 400 bar max
Weight	: 1.30 kg
Supplied with seals	

Designation code : **MR . P - 5 - * - 1/4" G**

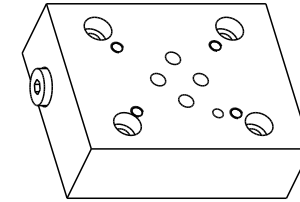
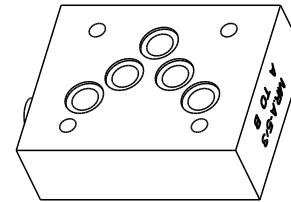
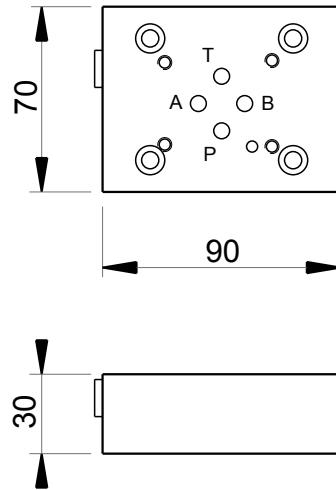
MECABOR
Sandwich plate for
pressure test points
CETOP 5

G : ports BSP

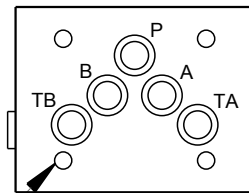
P = pressure test point on P
AB = pressure test points
on A and B

MR.A-5/3

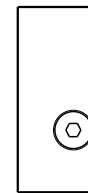
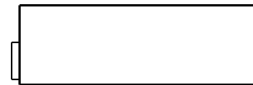
Adaptor plate Cetop 3 to Cetop 5, AB and BA
CETOP 5 / NG10



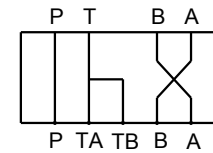
MRA-5/3
A TO B



4 x Ø6.5



CETOP 3



CETOP 5

MR.A-5/3

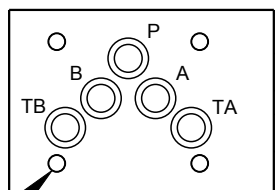
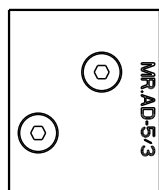
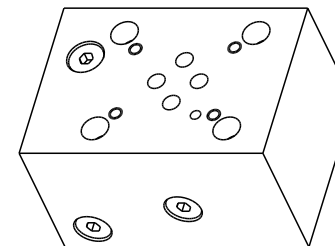
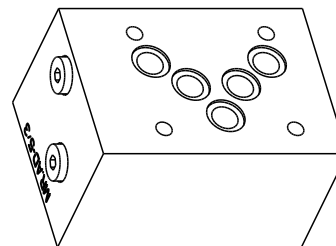
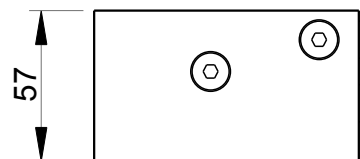
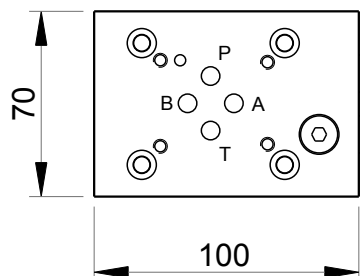
CAD Files
MRA-5/3

Technical specifications	
Material	: Steel (1.0736) - Phosphating
Pressure	: 400 bar max
Weight	: 1.40 kg
Supplied with seals and screws	

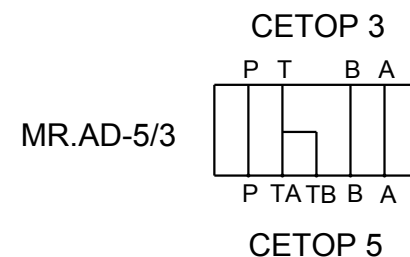
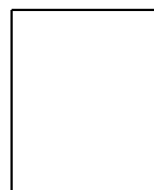
Designation code :

MR . A - 5 / 3

MECABOR
Adaptor plate
CETOP 5
CETOP 3



4 x Ø6.5



CAD Files
MRAD-5/3

Technical specifications	
Material	: Steel (1.0736) - Phosphating
Pressure	: 400 bar max
Weight	: 2.90 kg
Supplied with seals and screws	

Designation code :

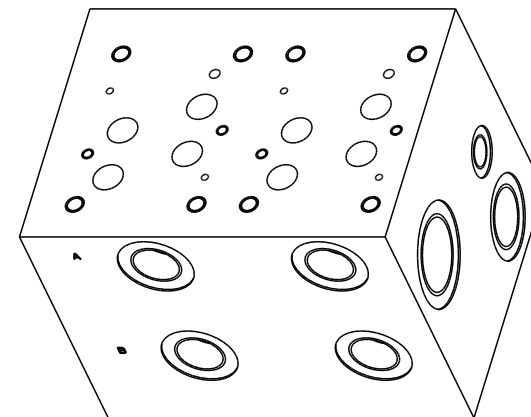
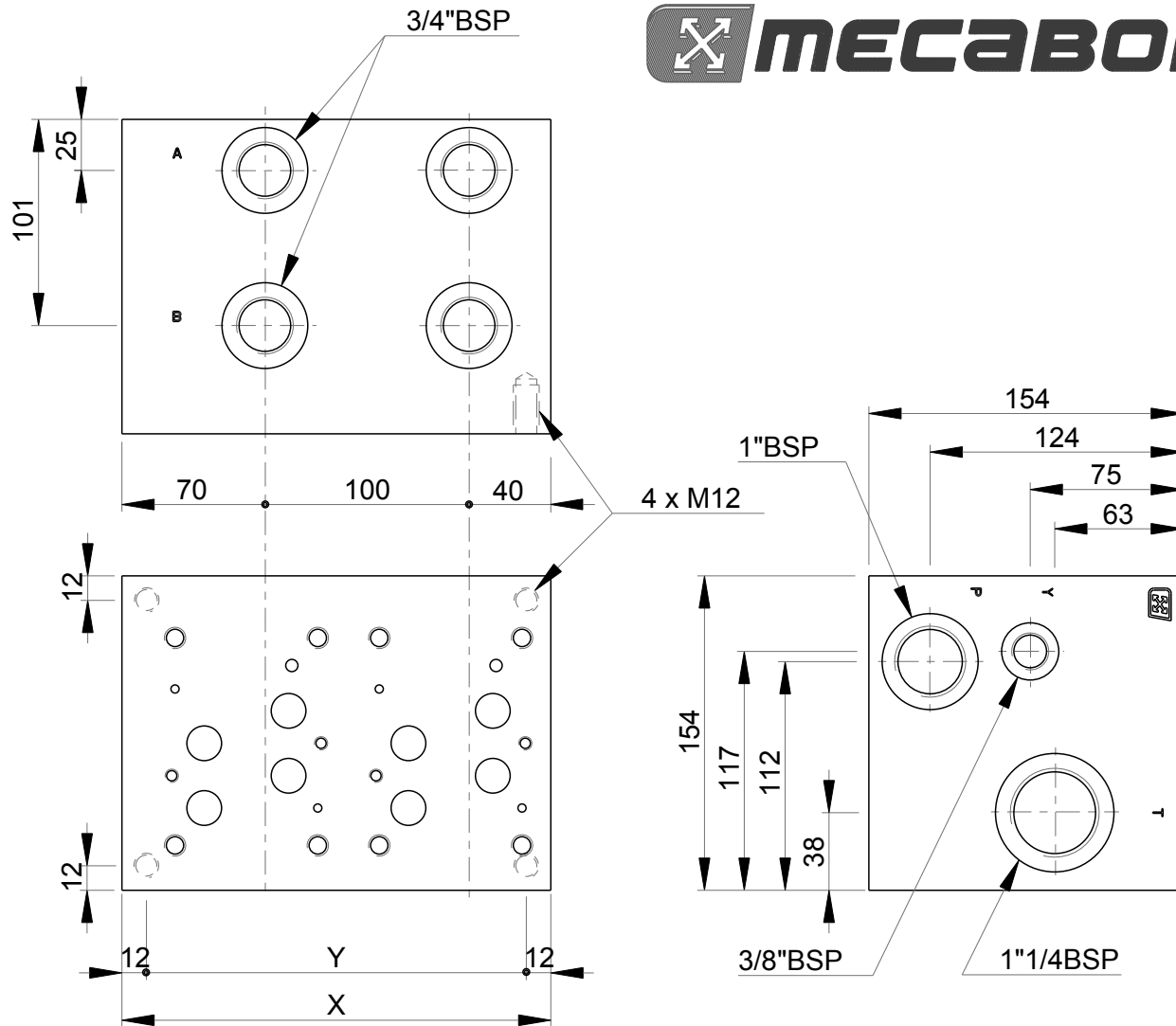
MR . AD - 5 / 3



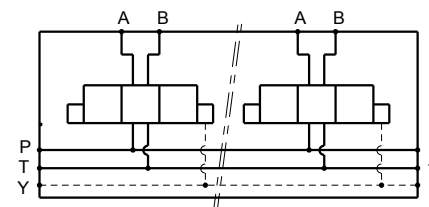


MR-7...3/4"

Side ports manifold with 3/4" ports - CETOP 7 / NG16



Stations	X	Y	(kg)	CAD Files
1	110	86	16	MR7-1 3/4"G
2	210	186	30	MR7-2 3/4"G



Technical specifications	
Material	: Cast iron (0.6025) - Phosphating
Pressure	: 300 bar max
Flow rate	: 220 L/min max

Designation code :

MR - 7 - * - 3/4" G

MECABOR

CETOP 7
side ports

Station number

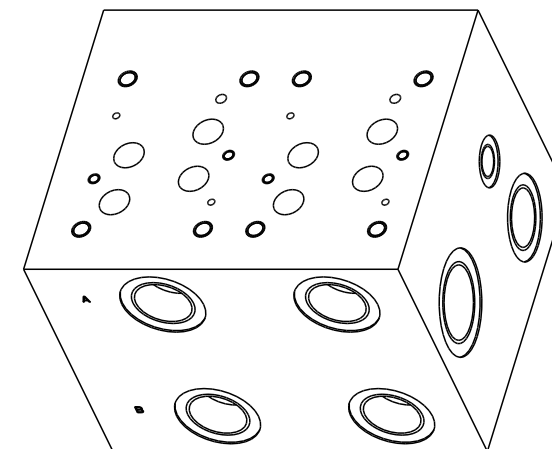
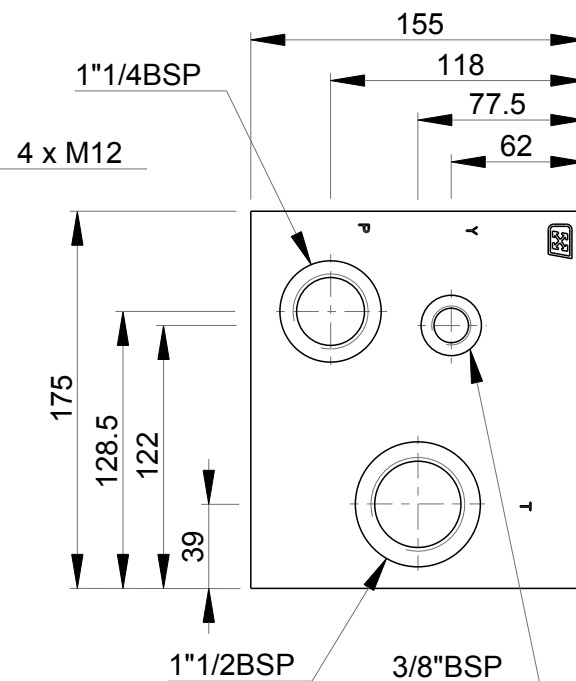
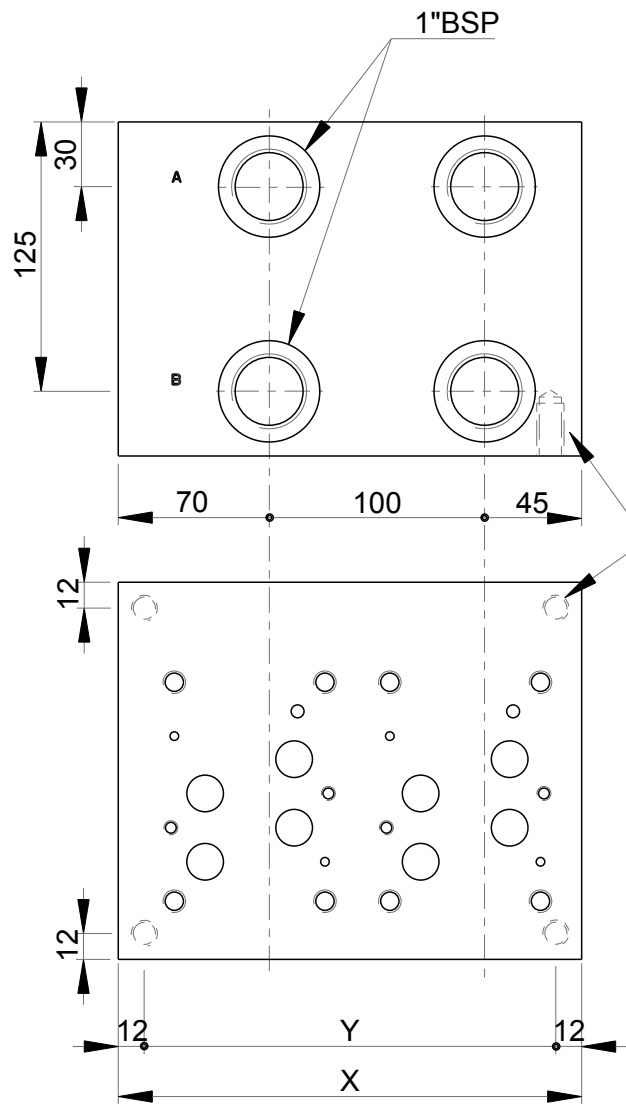
G : ports BSP

Ports

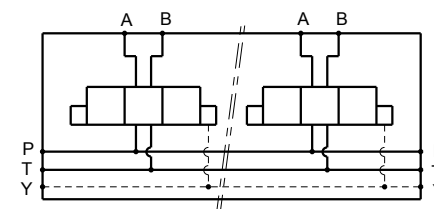


MR-7...1"

Side ports manifold with 1" ports - CETOP 7 / NG16



Stations	X	Y	(kg)	CAD Files
1	115	91	19	MR7-1 1"G
2	215	191	35	MR7-2 1"G
3	315	291	51	MR7-3 1"G



Technical specifications	
Material	: Cast iron (0.6025) - Phosphating
Pressure	: 300 bar max
Flow rate	: 270 L/min max

Designation code :

MR - 7 - * - 1" G

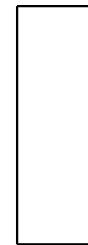
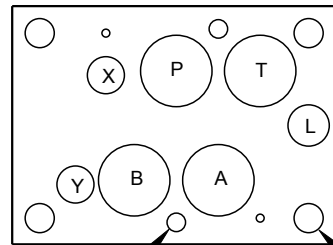
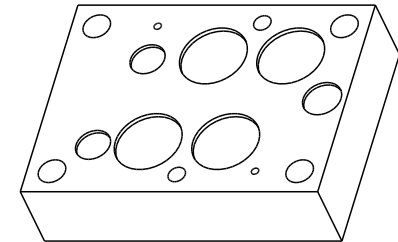
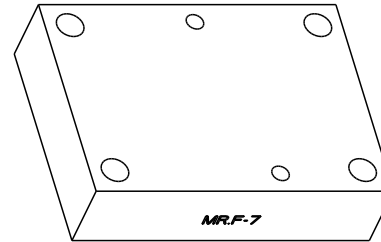
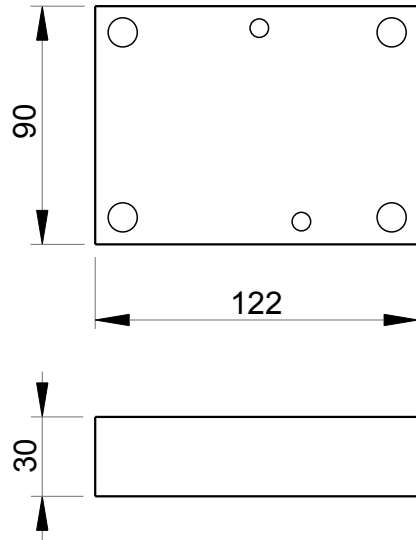
MECABOR

CETOP 7
side ports

Station number

G : ports BSP

Ports



2 x Ø7 4 x Ø11



MR.F-7



CAD Files
MRF7

Technical specifications	
Material	: Steel (1.0764) - Phosphating
Pressure	: 400 bar max
Weight	: 2.60 kg
Supplied with seals and screws	

Designation code :

MR . F - 7

MECABOR

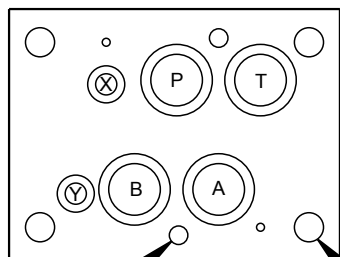
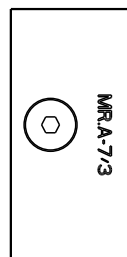
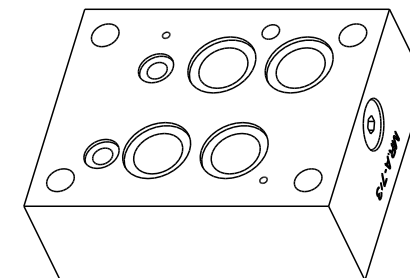
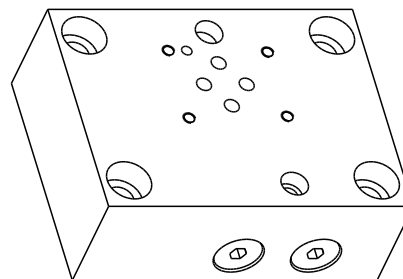
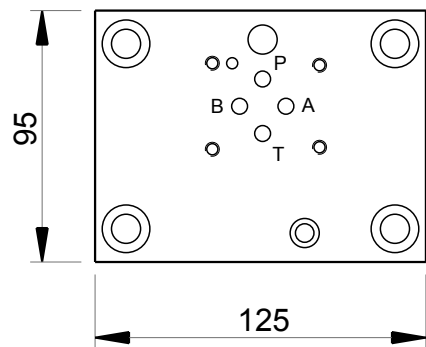
Blanking plate

CETOP 7



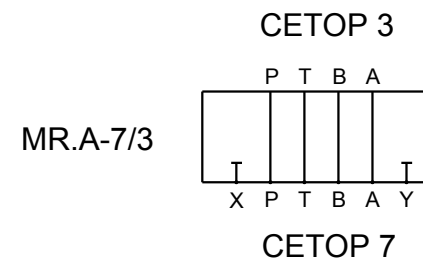
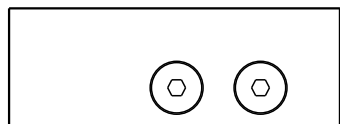
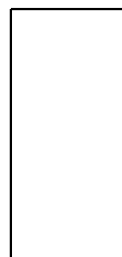
MR.A-7/3

Adaptor plate Cetop 3 to Cetop 7 - CETOP 7 / NG16



2 x Ø7

4 x Ø11



MRA-7/3

CAD Files
MRA-7/3

Technical specifications	
Material	: Steel (1.0764) - Phosphating
Pressure	: 400 bar max
Weight	: 3.80 kg
Supplied with seals and screws	

Designation code :

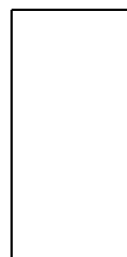
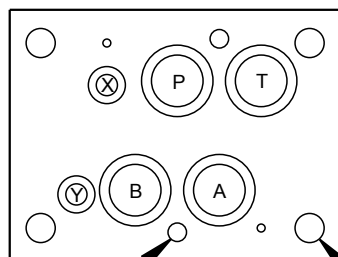
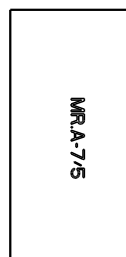
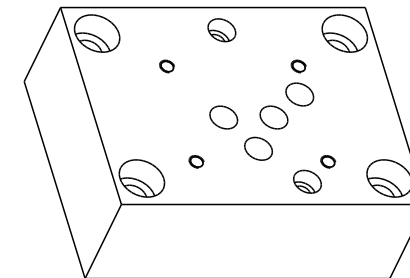
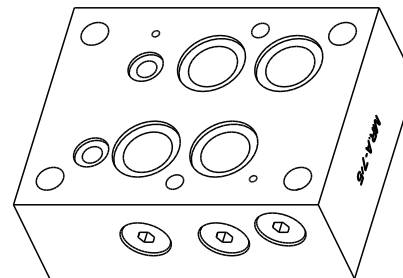
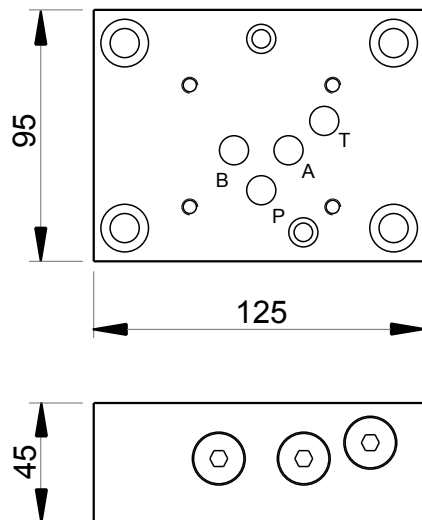
MR . A - 7 / 3

MECABOR

Adaptor plate

CETOP 7

CETOP 3



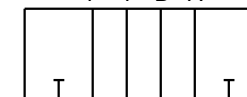
2 x Ø7

4 x Ø11



CETOP 5

P T B A



CAD Files
MR.A-7/5

MR.A-7/5

CETOP 7

Designation code :

MR . A - 7 / 5

MECABOR

Adaptor plate

CETOP 7

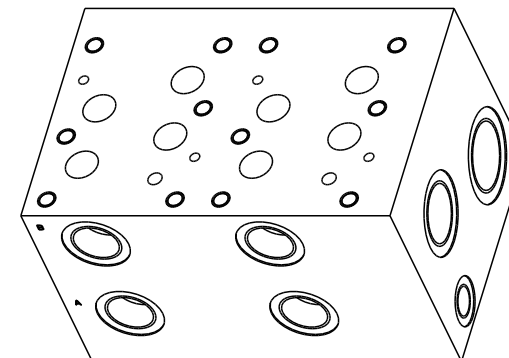
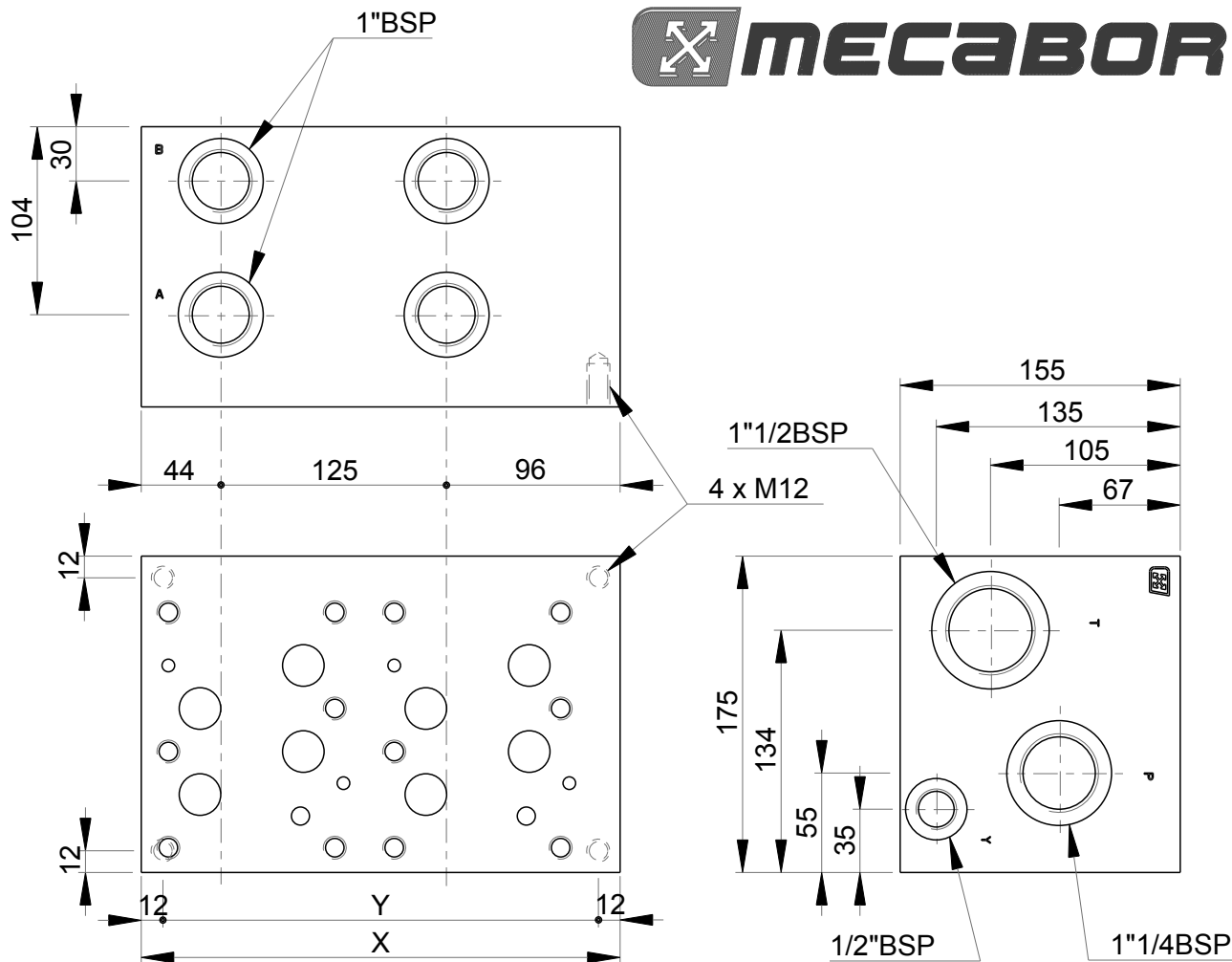
CETOP 5

Technical specifications	
Material	: Steel (1.0764) - Phosphating
Pressure	: 400 bar max
Weight	: 3.60 kg
Supplied with seals and screws	

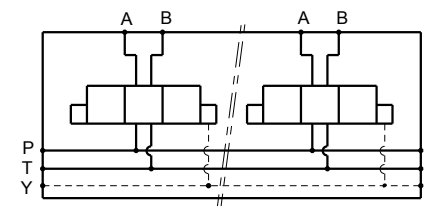


MR-8...1"

Side ports manifold with 1" ports - CETOP 8 / NG25



Stations	X	Y	(kg)	CAD Files
1	140	116	23	MR8-1 1"G
2	265	241	43	MR8-2 1"G



Technical specifications	
Material	: Cast iron (0.6025) - Phosphating
Pressure	: 300 bar max
Flow rate	: 350 L/min max

Designation code :

MR - 8 - * - 1" G

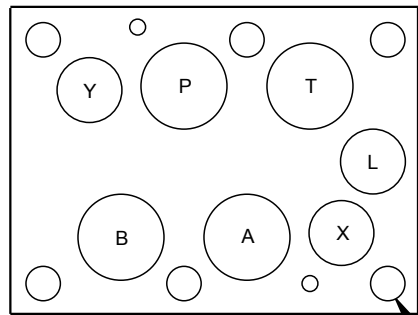
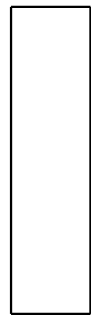
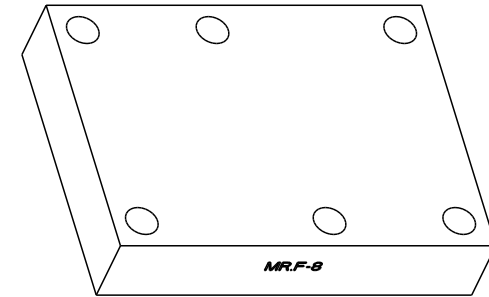
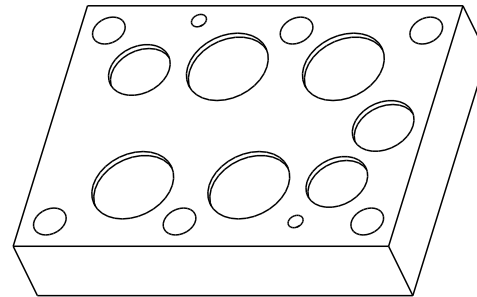
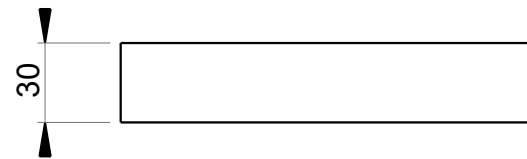
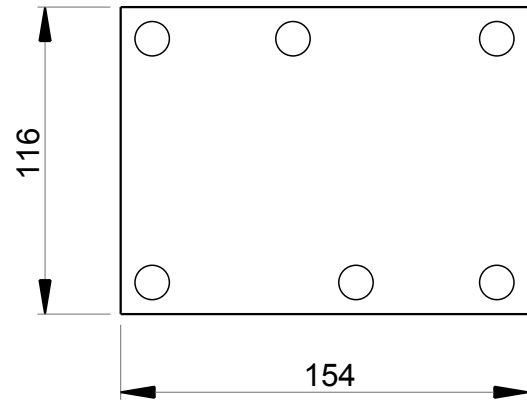
MECABOR

CETOP 8
side ports

Station number

G : ports BSP

Ports



Technical specifications	
Material	: Steel (1.0764) - Phosphating
Pressure	: 400 bar max
Weight	: 4.30 kg
Supplied with seals and screws	

MR.F-8



CAD Files
MRF8

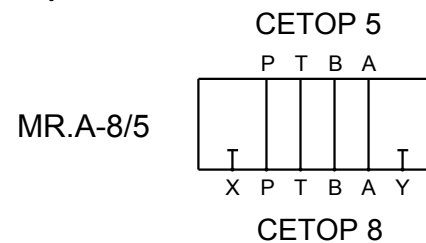
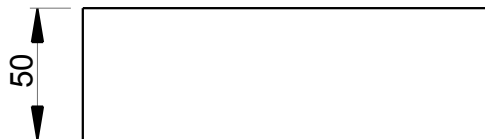
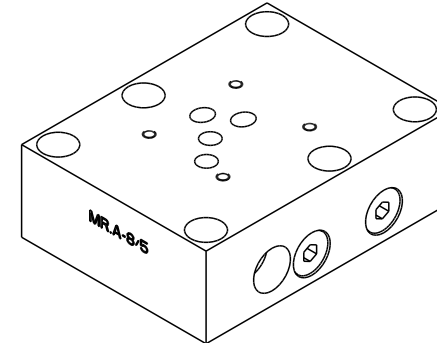
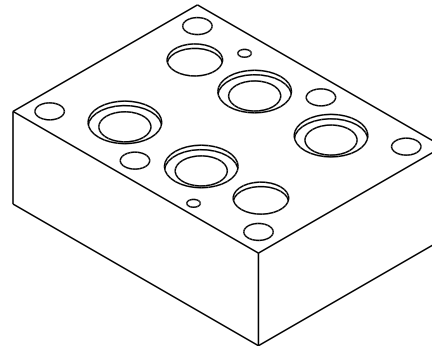
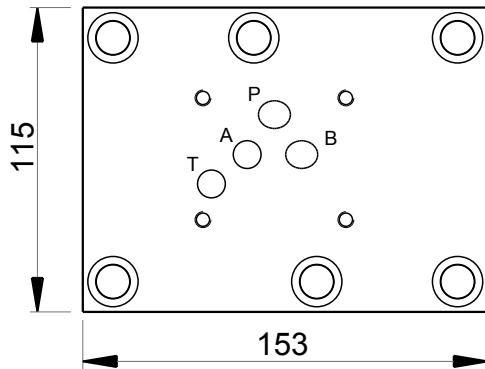
Designation code :



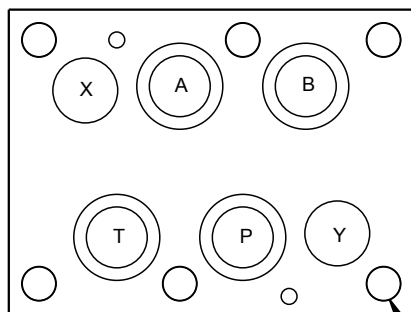
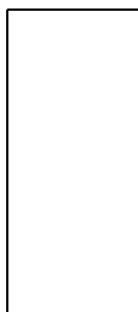
MECABOR

Blanking plate

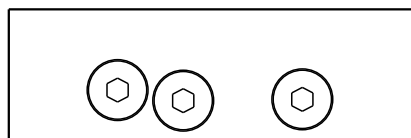
CETOP 8



CAD Files
MRA-8/5



6 x Ø13

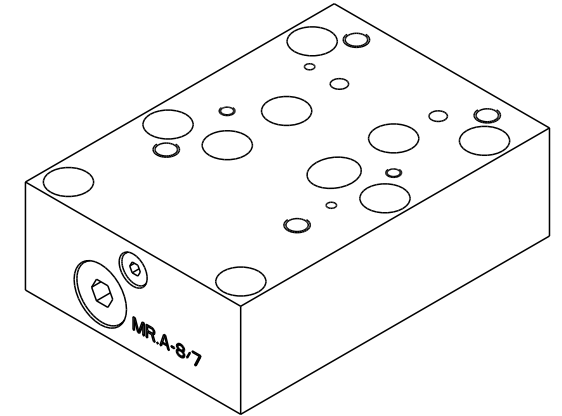
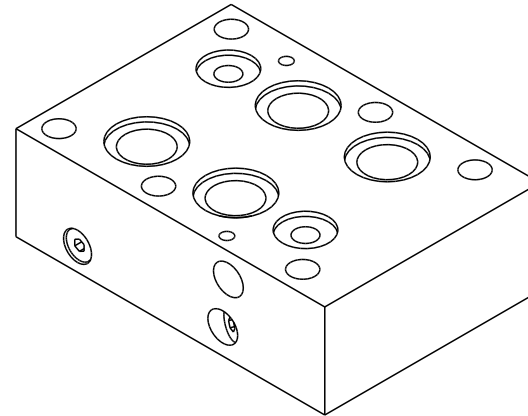
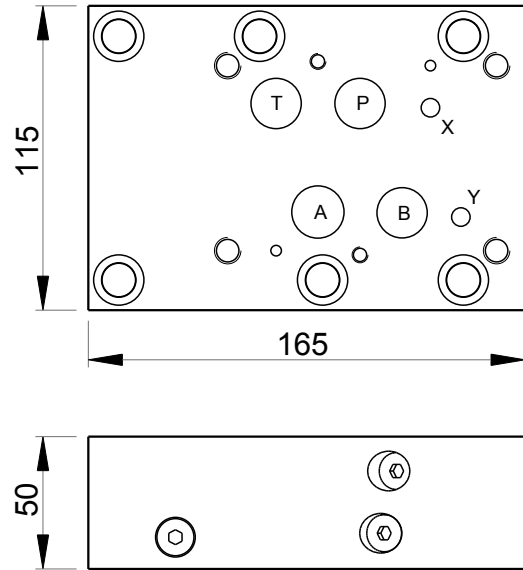


Technical specifications	
Material	: Steel (1.0764) - Phosphating
Pressure	: 400 bar max
Weight	: 5.70 kg
Supplied with seals and screws	

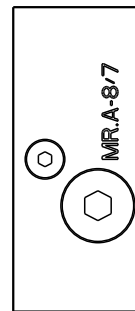
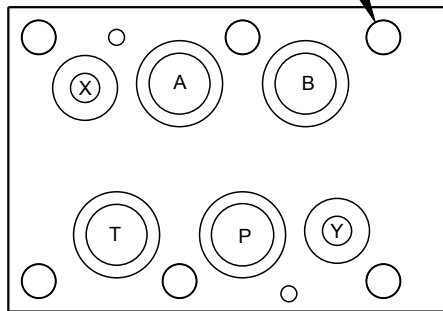
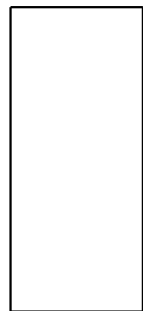
Designation code :

MR . A - 8 / 5

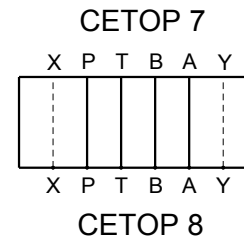
- MECABOR
- Adaptor plate
- CETOP 8
- CETOP 5



6 x Ø13



MR.A-8/7



CAD Files
MRA-8/7

Technical specifications	
Material	: Steel (1.0764) - Phosphating
Pressure	: 400 bar max
Weight	: 6.30 kg
Supplied with seals and screws	

Designation code :

MR . A - 8 / 7

MECABOR

Adaptor plate

CETOP 8

CETOP 7

***Kontakt für Anfragen, technische Informationen,
Bestellungen und sonstige Fragen:***

**Contact for enquiries, technical Information, orders and
further questions:**

Hydro Ass Hydraulik – Steuerungstechnik GmbH

Am Brichelberg 3

66271 Kleinblittersdorf

Deutschland / Germany

Tel.: 0049/6805/2049901

Fax: 0049/6805/2049903

E-Mail: info@hydro-ass.de

Web: www.hydro-ass.de

Online-Shop: www.hydraulikhandel-saarland.de



... wir machen das!
www.hydraulikhandel-saarland.de

**Ihr Hydraulik-Servicepartner in der Großregion Saarland,
Rheinland-Pfalz, Baden-Württemberg, Luxembourg, Lorraine
und Alsace**